

Cellular Localization of a chromogranin B-like derived peptides in leeches

Michel Salzet

Laboratoire de Neuroimmunologie des Annélides, UMR CNRS 8017, SN3, IFR 118, Université des Sciences et Technologies de Lille. 59650 Villeneuve d'Ascq, France.

Correspondence to: Prof. Michel Salzet
Laboratoire de Neuroimmunologie des Annélides,
UMR CNRS 8017, SN3,
Université des Sciences et Technologies de Lille.
59650 Villeneuve d'Ascq, FRANCE.
PHONE: +33 3 2033 7277 FAX: +33 3 2004 1130
E-MAIL: michel.salzet@univ-lille1.fr

Submitted: May 20, 2002

Accepted: May 20, 2002

Key words: **chromogranin B; leech; Immunocytochemistry; Secretolytin**

Neuroendocrinology Letters 2002; 23:209-212 pii: NEL230302A01 Copyright © Neuroendocrinology Letters 2002

Abstract

Using immunocytochemistry techniques, we demonstrated specific immunostaining with antibodies rose against fragment (547-560) and (614-626) of bovine chromogranin B (CGB) at the level of brain and the tegument of the leech *Theromyzon tessulatum*. The used of these antibodies on leech sections revealed immunopositive labeling in neurons and glial cells of the central nervous system (CNS), and epidermal glandular cells of the tegument. Co-localization between two antibodies rose against different fragment of bovine CGB have been demonstrated in neurons and glial cells of leech CNS like in vertebrates. Finally, the whole of the data showed for the first time the presence in leeches of CGB like derived peptides.

1. Introduction

Chromogranins are acidic proteins which are found throughout neuroendocrine system [1]. They comprise several defined proteins which have been named chromogranin A [2, 3], chromogranin B [4] [5]; secretogranin II [6] [7], 7B2 [8], ProSAAS [9]. These proteins distribution have been undergone in rat brain in great detail [1,6,10-12]. Interestingly, prochromogranin B (CGB) is known to be processed in several peptides *i.e.* GAWK, CCB, BAM-1745, OA21, OA8, LE-20, NL-10, OY-10 presenting several dif-

ferent biological functions [5]. In addition to their roles as helper proteins in the packaging of peptides, they may serve as pro-hormones to generate biologically active peptides such as vasostatin-1 and secretolytin [13, 14]. These molecules derived from CGA and CGB respectively, possess antimicrobial properties [13, 14]. From the C-terminal part of CGB, two peptides have been identified in both rat and bovine endocrine tissue *i.e.* the peptide 11 (PE11) at position 552-562 [15] and secretolytin at position 614-621 [13]. We have recently demonstrated that

immune cells also contain CGA and CGB [16–18] like proenkephalin [19]. Moreover, secretolytin is shown to be released from monocytes *in vitro* under interleukin 6 stimulation [20]. In the present study, we demonstrate using the immunocytochemical technique that chromogranin B derived peptides like a leech secretolytin are also present in leeches like we also previously demonstrated for enkelytin, another antimicrobial neuropeptide derived peptide, the proenkephalin [21–23].

2. Material and Methods

2.1. Animals

Mature specimens of the rhynchobdellid leech *T. tessulatum*, reared under laboratory conditions as described by Malecha [24, 25] were used in this study.

2.2. Antiserum

Polyclonal antisera used in immunocytochemistry were kindly provided by Dr M.H. Metz-Boutigue (INSERM U 338, Strasbourg, France). These rabbit antibodies recognize synthetic peptides corresponding to bovine secretolytin (CGB 614–626), and the C-terminal part of bovine chromogranin B (CGB 547–560) [19].

2.3. Immunocytochemical procedures

Anterior parts of *T. tessulatum* were fixed overnight at 4°C in Bouin-Hollande fixative (+10% HgCl₂ saturated solution) [26]. They were then embedded in paraffin and serially sectioned at 7 µm. After removal of paraffin with toluene, the sections were successively treated with the anti-CGB diluted 1:200 and with goat anti-rabbit IgG conjugated to horseradish peroxidase as described elsewhere. The specificity of anti-CGB was tested on consecutive sections mounted on different slides by pre-adsorbing the antiserum overnight at 4°C with the homologous antigen [synthetic peptide, Neosystem (Strasbourg, France)] at a concentration of 350 µg/ml of pure antiserum.

3. Results and Discussion

3.1. Central nervous system localization

Immunocytochemical experiments were performed on leech tissues. Neurons (Fig. 1a, c, d) and glial cells (Fig. 1e) in the compartments of the supra-oesophageal ganglion are stained with both antisera directed against the peptide E11 [15] and the secretolytin [13], allowing to suspect the presence of such molecules in leech nervous system. Immunopositive staining with anti-CGB (547–560) and (614–626) in same neurons have also been detected (Fig. 1a–1f) reflecting that the C-terminal part of CGB is present in leech neurons and that leech CGB processing will occur in leech like in vertebrates [27]. Moreover, besides data obtained at the level of the brain, similar results were found in epithelial glandular cells of the tegument (Fig. 1g–1j) as

we previously obtained for enkelytin, an antimicrobial peptide derived from proenkephalin processing [21]. Furthermore, the specificity of the staining was checked by pre-adsorbing the antibody with its specific synthetic peptide (Fig 1k, 1l).

Taken together, these data are in lines with the ones, we obtained with another endocrine marker, the enkelytin [21]. This peptide is present in brain, nervous and immune systems as well as the tegument like for the ones we detected with the anti-CGB (614–626) which is corresponding to bovine secretolytin [13]. Indeed, enkelytin like secretolytin, with their high antibacterial activities, further associates opioid peptides with immune related activities [28]. We surmise that immune or neural signalling may lead to enhanced proenkephalin and CGB proteolytic processing freeing both opioid peptides and enkelytin or secretolytin-like peptide [21]. In this scenario, the opioid peptides would stimulate immunocyte chemotaxis and phagocytosis as well as the secretion of cytokines. During this process, the simultaneously liberated enkelytin and leech secretolytin would attack bacteria immediately, allowing time for the immunocyte stimulating capabilities of the opioid peptides to manifest themselves [16–18]. This hypothesis is further supported by the presence of specific met-enkephalin receptors on these cells. Thus, it appears that many of the mammalian molecular and cellular survival strategies first appeared in organisms that evolved at least 500 million years ago. They may have evolved first to supplement immune actions, i.e., enkelytin, leech secretolytin by covering the latency period before total or partial immune activation occurs [16–18].

Acknowledgements

The authors are grateful to A. Desmons for her technical assistance. This work was partially supported by the Centre National de la Recherche Scientifique, the Ministère de l'Éducation Nationale et de la Recherche et de la Technologie, the Genopole de Lille and the ANVAR.

REFERENCES

- 1 Fahrenkamp AG, et al. Immunohistochemical distribution of chromogranins A and B and secretogranin II in neuroendocrine tumours of the gastrointestinal tract. *Virchows Arch* 1995; **426**:361–7.
- 2 Blaschko H, et al. Secretion of a chromaffin granule protein, chromogranin, from the adrenal gland after splanchnic stimulation. *Nature* 1967; **215**:58–9.
- 3 Blaschko H. Biochemical studies on chromaffin cells. *Naunyn Schmiedeberg's Arch Exp Pathol Pharmacol* 1967; **257**:143–7.
- 4 Benjannet S, et al. Chromogranin B (secretogranin I), a putative precursor of two novel pituitary peptides through processing at paired basic residues. *FEBS Lett* 1987; **224**:142–8.
- 5 Grandy DK, et al. Nucleotide and deduced amino acid sequence of bovine adrenal medulla chromogranin B (secretogranin I). *Cell Mol Neurobiol* 1992; **12**:185–92.

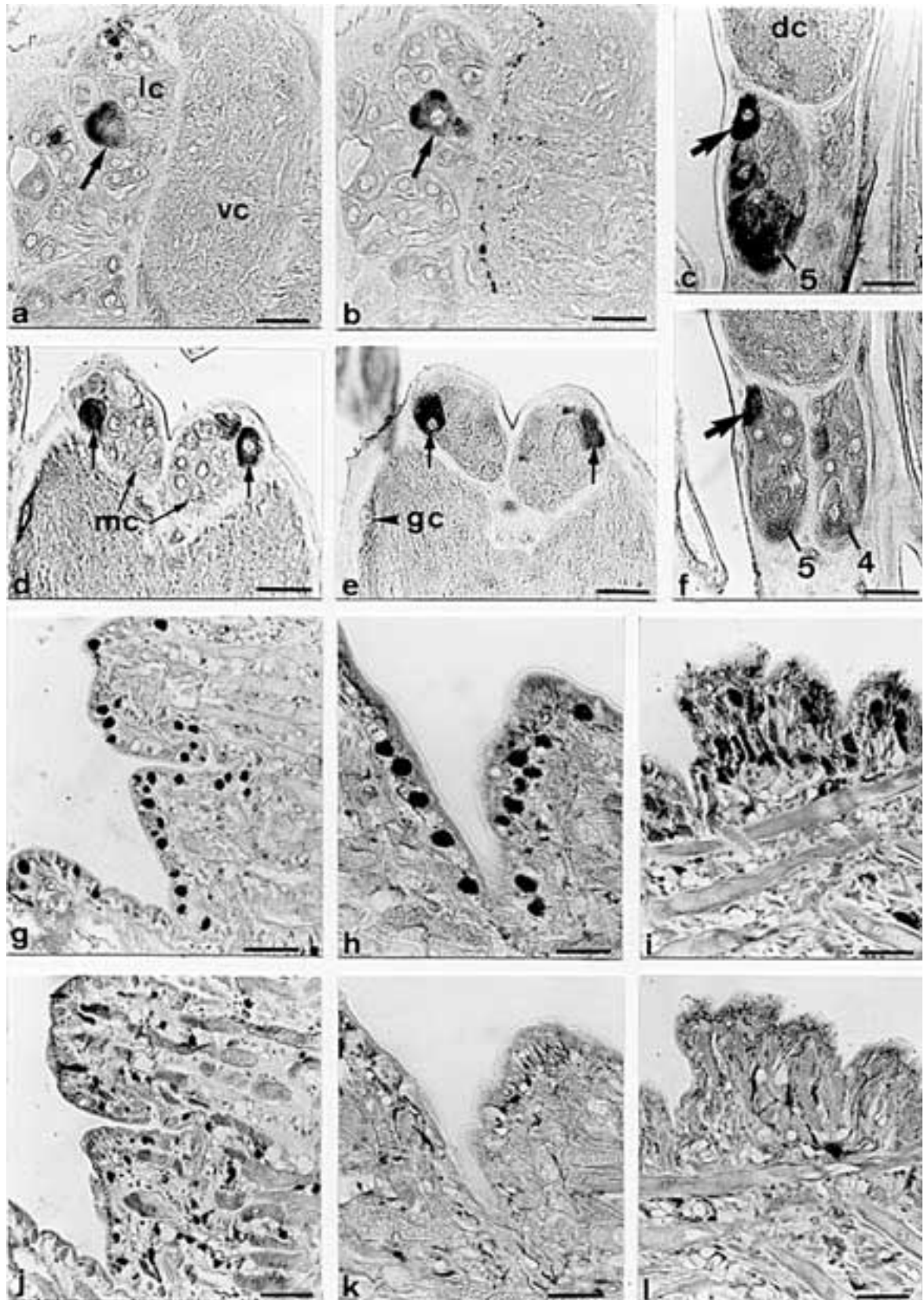


Figure 1: Cellular localization of the chromogranin B derived-like peptide in *T. tessulatum*

a–f: CGB derived-like peptide immunoreactivity detected in some neurons of lateral (lc) (Fig. a) and median (mc) (Fig. d) of subesophageal ganglion. This immunoreactivity is also observed in fibers of dorsal (dc) (Fig. b, c, arrow) commissure. Scale bar = 35 μ m. Interestingly same cells (neurons and glial cells (gc) are stained by the anti-CGB (547–560) (a, c, d) and (614–626) (b, e, f).

g–i: Adjacent sections of epidermal and muscular area of the leech treated with anti-CGB (614–626). The staining is present at the level of the subepidermal glandular structures (g) and in more internal glandular structures (j). Control of specificity by preadsorption of anti-CGB (614–626) by the homologous antigen (secretolytin) is shown: (h, i) positive immunostaining; (k, l) after preadsorption of the antiserum.

- 6 Schmid KW, et al. Chromogranin A, secretogranin II and vasoactive intestinal peptide in pheochromocytomas and gangliogliomas. *Histopathology* 1993; **22**:527–33.
- 7 Overdick B, et al. Presence and distribution of a new neuropeptide, secretoneurin, in human retina. *Peptides* 1996; **17**:1–4.
- 8 Day R, et al. Maintained PC1 and PC2 expression in the AtT-20 variant cell line 6T3 lacking regulated secretion and POMC: restored POMC expression and regulated secretion after cAMP treatment. *DNA Cell Biol* 1995; **14**:175–88.
- 9 Fricker LD, et al. Identification and characterization of pro-SAAS, a granin-like neuroendocrine peptide precursor that inhibits prohormone processing. *J Neurosci* 2000; **20**:639–48.
- 10 Schmid KW, et al. Immunohistochemical localization of chromogranins A and B and secretogranin II in normal, hyperplastic and neoplastic prostate. *Histopathology* 1994; **24**:233–9.
- 11 Schmid KW, et al. Immunohistochemical demonstration of chromogranin A, chromogranin B, and secretogranin II in extra-adrenal paragangliomas. *Mod Pathol* 1994; **7**:347–53.
- 12 Schmid KW, et al. Immunohistochemical comparison of chromogranins A and B and secretogranin II with calcitonin and calcitonin gene-related peptide expression in normal, hyperplastic and neoplastic C-cells of the human thyroid. *Histopathology* 1992; **21**:225–32.
- 13 Strub JM, et al. Antibacterial activity of secretolytin, a chromogranin B-derived peptide (614–626), is correlated with peptide structure. *FEBS Lett* 1996; **379**:273–8.
- 14 Metz-Boutigue MH, et al. Antibacterial peptides are present in chromaffin cell secretory granules. *Cell Mol Neurobiol* 1998; **18**:249–66.
- 15 Kroesen S, et al. Rat brain: distribution of immunoreactivity of PE-11, a peptide derived from chromogranin B. *Eur J Neurosci* 1996; **8**:2679–89.
- 16 Salzet M. Immune cells express endocrine markers. *Neuroendocrinol Lett* 2002; **23**:8–9.
- 17 Salzet M. Neuroimmunology of opioids from invertebrates to human. *Neuroendocrinol Lett* 2001; **22**:467–74.
- 18 Salzet M. Vertebrate innate immunity resembles a mosaic of invertebrate immune responses. *Trends Immunol* 2001; **22**:285–8.
- 19 Tasiemski A, et al. The presence of antibacterial and opioid peptides in human plasma during coronary artery bypass surgery. *J Neuroimmunol* 2000; **109**:228–35.
- 20 Taseimki et al. 20002 ???
- 21 Tasiemski A, et al. Proenkephalin A-derived peptides in invertebrate innate immune processes. *Brain Res Mol Brain Res* 2000; **76**:237–52.
- 22 Salzet M. Neuroimmunology of opioids from invertebrates to human. *Neuroendocrinol Lett* 2001; **22**:467–74.
- 23 Salzet M and A Tasiemski. Involvement of pro-enkephalin-derived peptides in immunity. *Dev Comp Immunol* 2001; **25**:177–85.
- 24 Malecha J, et al. [Evidence of apparent vasopressin and oxytocin peptides in the brain of the leech *Rhynchobdella Thero-myzon tessulatum* (O.F.M.)]. *Gen Comp Endocrinol* 1986; **64**:13–20.
- 25 Malecha J. [Osmoregulation in *Hirudinea Rhynchobdellida Thero-myzon tessulatum* (O.F.M.). Experimental localization of the secretory zone of a regulation factor of water balance]. *Gen Comp Endocrinol* 1983; **49**:344–51.
- 26 Salzet M, et al. Oxytocin-like peptide: a novel epitope colocalized with the FMRFamide-like peptide in the supernumerary neurons of the sex segmental ganglia of leeches – morphological and biochemical characterization; putative anti-diuretic function. *Brain Res* 1993; **601**:173–84.
- 27 Kimura N, et al. Immunohistochemical expression of chromogranins A and B, prohormone convertases 2 and 3, and amidating enzyme in carcinoid tumors and pancreatic endocrine tumors. *Mod Pathol* 2000; **13**:140–6.
- 28 Stefano GB, B Salzet, and GL Fricchione. Enkealytin and opioid peptide association in invertebrates and vertebrates: immune activation and pain. *Immunol Today* 1998; **19**:265–8.