

Characterization of the first non-insect invertebrate functional angiotensin-converting enzyme (ACE): leech *TtACE* resembles the N-domain of mammalian ACE

Guillaume RIVIÈRE^{*1}, Annie MICHAUD^{†1}, Laurence DELOFFRE[‡], Franck VANDENBULCKE[§], Angélique LEVOYE^{||}, Christophe BRETON^{*}, Pierre CORVOL[†], Michel SALZET[§] and Didier VIEAU^{*2}

^{*}Laboratoire de Neuroendocrinologie du Développement, UPRES-EA 2701, Bat SN4 2^e étage, Université des Sciences et Technologies de Lille, 59655 Villeneuve d'Ascq Cédex, France, [†]INSERM U 36, Pathologie Vasculaire et Endocrinologie Rénale, Collège de France, 11, place Marcellin Berthelot, 75231, Paris cedex 05, France, [‡]Centro de Ciências do Mar, Universidade do Algarve, Campus de Gambelas, 8005-139 Faro, Portugal, [§]CNRS UMR 8017, Laboratoire de Neuroimmunologie des Annelides, Université des Sciences et Technologies de Lille, 59655 Villeneuve d'Ascq Cedex, France, and ^{||}Institut Cochin, CNRS UMR 8104–INSERM U567, IFR Alfred Jost, 22 rue Méchain, 75014 Paris, France

Angiotensin-converting enzyme (ACE) is a zinc metallopeptidase that plays a major role in blood homeostasis and reproduction in mammals. In vertebrates, both transmembrane and soluble ACE, containing one or two homologous active sites, have been characterized. So far, several ACEs from invertebrates have been cloned, but only in insects. They are soluble and display a single active site. Using biochemical procedures, an ACE-like activity was detected in our model, the leech, *Theromyzon tessulatum*. Annelida is the most distant phylum in which an ACE activity has been observed. To gain more insight into the leech enzyme, we have developed a PCR approach to characterize its mRNA. The approx. 2 kb cDNA has been predicted to encode a 616-amino-acid soluble enzyme containing a single active site, named *TtACE* (*T. tessulatum* ACE). Surprisingly, its primary sequence shows greater similarity to vertebrates than to invertebrates. Stable *in vitro* expression of *TtACE*

in transfected Chinese-hamster ovary cells revealed that the leech enzyme is a functional metalloprotease. As in mammals, this 79 kDa glycosylated enzyme functions as a dipeptidyl carboxypeptidase capable of hydrolysing angiotensin I to angiotensin II. However, a weak chloride inhibitory effect and acetylated *N*-acetyl-SDKP (Ac SDAcKP) hydrolysis reveal that *TtACE* activity resembles that of the N-domain of mammalian ACE. *In situ* hybridization shows that its cellular distribution is restricted to epithelial midgut cells. Although the precise roles and endogenous substrates of *TtACE* remain to be identified, characterization of this ancestral peptidase will help to clarify its physiological roles in non-insect invertebrate species.

Key words: angiotensin-converting enzyme, cloning, enzymic activity, evolution, invertebrate, leech.

INTRODUCTION

Angiotensin-converting enzyme (dipeptidyl-peptidase A, kinase II; EC 3.4.15.1, dicarboxypeptidase 1, DCP1; referred to as ACE) is a dipeptidyl carboxypeptidase belonging to the M2-metalloprotease family. Within the renin–angiotensin system, this zinc-dependent metalloprotease converts the inactive decapeptide Ang I (angiotensin I) into the vasopressor octapeptide Ang II. ACE also inactivates bradykinin, a vasodilator peptide, and thus contributes to blood pressure increase in mammals (see [1,2] for reviews). In vertebrates, two separate isoforms have been characterized: somatic (sACE) and testicular (germinal) ACE (tACE) are encoded by a single gene from two alternate promoters. This gene arose from an ancestor gene possessing a unique active-site-coding region [3]. sACE and tACE differ with regard to the number of their active sites: sACE presents two highly conserved glutamic active sites, HEXXH, whereas tACE possesses only one, corresponding to the C-terminal domain of sACE. sACE N- and C-terminal active sites (referred to as N- and C-domains respectively) have distinct enzymic activities on endogenous and/or synthetic substrates. In addition, inhibitors of ACE can discriminate

between the two domains. For example, it has been shown that the C-domain is responsible for the major part of Ang I hydrolysis by sACE [4]. In contrast, N-domain ACE cleaves more efficiently the haemoregulatory peptide *N*-acetyl-SDKP [5] and Ang 1–7 [6]. Both sACE and tACE present a C-terminal transmembrane domain, and are membrane-anchored isoforms that can be solubilized in the extracellular medium by a secretase [7–10]. This post-translational cleavage has been reported as ‘shedding’. It could influence ACE activity, since especially membrane-bound forms of ACE are catalytically active *in vivo* [11,12]. An ACE homologue, ACE2, has recently been characterized in humans [13,14] and mice [15]. Being membrane-bound, the single active site ACE2 functions as a monocarboxypeptidase and is insensitive to the classical ACE inhibitor captopril [13,16]. ACE2 competes with ACE for Ang I in humans and, furthermore, degrades Ang II to Ang 1–7. Therefore ACE2 (through the ACE/ACE2 ratio) is an essential regulator for functioning of the heart.

In invertebrates, ACE-related genes have only been cloned in insects so far. Interestingly, all these genes encode soluble, single active-site enzymes [17–19]. In the fruitfly, *Drosophila melanogaster*, six potential genes encoding ACE-like proteins have been

Abbreviations used: Ac, *N*-acetyl; ACE, angiotensin-converting enzyme; sACE, somatic ACE; tACE, testicular (germinal) ACE; *TtACE*, *Theromyzon tessulatum* ACE; Ang I, angiotensin I; CHO cell, Chinese-hamster ovary cell; DpaOH, *N*⁶(2,4-dinitrophenyl)-L-2,3-diaminopropionyl-OH; HHL, Hippuryl-His-Leu; mAb, monoclonal antibody; Mca, (7-methoxycoumarin-4-yl)acetyl-; ORF, open reading frame; RT, reverse transcriptase; 3'-UTR, 3'-untranslated region.

¹ These authors have contributed equally to this work.

² To whom correspondence should be addressed (email didier.vieau@univ-lille1.fr).

The nucleotide sequence data reported have been submitted to the DDBJ, EMBL, GenBank[®] and GSDB Nucleotide Sequence Databases under the accession number AY560004.

identified *in silico*. Two zinc-binding-pattern-conserved cDNAs have been cloned, encoding homologous enzymes and named AnCE [20] and Race [17]. Both AnCE and Race show approx. 40% amino acid sequence identity with ACEs from vertebrates and share similar enzymic properties [21] while acting on a broad range of substrates. Moreover, these latter enzymes, which have not been reported to be involved in volaemia, were demonstrated to play a key role in development [13,22,23] and reproduction [24–26].

To our knowledge, no ACE-like protein has been characterized so far at the molecular level in non-insect invertebrates. In addition, no functional ACE is present in the genome of the nematode *Caenorhabditis elegans*. In this worm, Brooks et al. [27] identified genes encoding non-peptidase homologues among which ACN-1 (*C. elegans* ACE-like non-peptidase 1) has recently been demonstrated to play a crucial role in development despite being catalytically inactive. This raises relevant phylogenetic questions about the appearance of ACE during the course of evolution and the situation encountered in more distant groups.

Our model, the freshwater-living leech, *Theromyzon tessulatum* (Annelida; Clitellata; Hirudinida; Hirudinea; Rhynchobdellida; Glossiphoniidae), is an aquatic-bird ectoparasite; its life cycle has been divided into four stages according to its three blood meals. The third and last meal induces drastic morphological as well as physiological modifications such as a significant weight increase and induction of sexual maturation. Based on a recent phylogenetic classification (see Tree Of Life Web Project at <http://tolweb.org> and [28] for references), this Lophotrochozoa leech is considered to be at least as distant from vertebrates as the Ecdysozoa *C. elegans*. However, biochemical procedures have shown previously that an active ACE-like enzyme is present in *T. tessulatum* [29,30], suggesting that this leech contains an ancestral ACE-like protease.

In the present study, we report the molecular cloning and biochemical characterization of *TtACE* (*T. tessulatum* ACE), an ACE-like enzyme in *T. tessulatum*. To our knowledge, *TtACE* is the first non-insect invertebrate functional ACE-like enzyme ever cloned. To gain more insight into the evolutionary steps of ACE and to question its putative physiological roles in the leech, enzymic assays were performed on recombinant *TtACE* expressed in CHO-K1 cells (where CHO cell stands for Chinese-hamster ovary cell), together with multiplex semi-quantitative RT (reverse transcriptase)–PCR studies and *in situ* hybridization.

EXPERIMENTAL

Animals

Mature specimens of the leech, *T. tessulatum*, reared under laboratory conditions by the method described by Malecha [31], were used in the present study. Leeches' developmental stages were assessed according to their three blood meals (stage 0, from birth to the first meal; stage 1, between the first and the second meals; stage 2, between the second and the third meals; and stage 3, after the third and last meal). Stage 3 is subdivided into several periods as follows: early stage 3 completes the leech's genital tract maturation; however, leeches naturally die after egg laying and hatching, which terminate stage 3.

Reverse transcription

Total RNA was isolated from tissues of stage 1, 2 and 3 leeches by the guanidium thiocyanate/phenol/chloroform method using TRIzol[®] according to the manufacturer's instructions (Gibco BRL, Cergy-Pontoise, France). Equivalent amounts of RNA (5 µg) were reverse-transcribed with 200 units of Superscript II

RT (Invitrogen) according to the manufacturer's instructions, using dT adapter (5'-CGAGTCGACATCGATCGTTTTTTTTTTT-TTTTTT-3') as an antisense primer for the reaction.

Molecular characterization

The full-length *TtACE* cDNA sequence was obtained by primer walking on a PBM8-orientated stage 2 *T. tessulatum* plasmid cDNA library (Biometodes, Evry, France). Degenerate sense and antisense primers (ACEinv-S1, 5'-GTSTGYCAYGCSWSY-GCSTG-3'; ACEinv-AS1, 5'-GCYTCRTGRAASCCSGGRTT-3') were designed within the highly conserved regions surrounding the active site, HEXXH, of ACE in numerous vertebrate as well as invertebrate species, i.e. VCHASAWDFY and GANPGFHEA. PCRs were performed on 50 ng of PBM8 cDNA library in a Mastercycler gradient thermal cycler (Eppendorf). Cycling parameters were 5 min, 94 °C; 30 cycles: 1 min, 94 °C; 1 min, 42 °C; 1 min 30 s, 72 °C; and 5 min, 72 °C. The expected 180 bp products (according to various known ACE sequences) were resolved on a 2% (w/v) agarose gel stained with ethidium bromide and subcloned into the pGEM-T easy vector (Promega, Charbonnières, France). They were sequenced using fluorescent dideoxyterminator (ABI Prism BigDye Terminator Cycle Sequencing Ready Reaction kit) on an ABI prism 310 sequencer (both from Applied Biosystems) with pGEM-T easy-specific primers (F23, 5'-CCC-AGTCACGACGTTGTAAAAGG-3'; R23, 5'-AGCGGATAAC-AATTTACACACAGG-3').

Characterization of this fragment allowed us to design homologous primers, subsequently used in PCRs for the complete *TtACE* cDNA cloning. The 5' part of *TtACE* cDNA sequence was obtained from successive PCRs upstream of the coding region (i.e. primer walking) using antisense homologous primers. These primers were designed from previously characterized PBM8-s1 (5'-CGCCGTTACAGATCCAAGCTCC-3')/LACESAS1 (5'-AG-GCCACGGAATTGAAGATCC-3') PCR product sequences. The 3' part of *TtACE* was achieved using LACCESS1 (5'-TCCAAGTG-GTGGACAACAGG-3') and dT adapter primers. The PCR conditions were similar to those described above, except the annealing parameters that were adapted to each pair of primers (data available on request). Products were subcloned and sequenced as described above.

Similar degenerate primers (ACEinv-S1 and ACEinv-AS1) were also used to assess the presence of an ACE-like enzyme in other annelid species (*Erpobdella octoculata*, *Hirudo medicinalis* and *Nereis diversicolor*) using the procedure described above. Nested PCRs under the same conditions were performed when required.

Cloning of full-length *TtACE* cDNA and expression in cultured mammalian cells

Construct

Full-length *TtACE* cDNA was amplified by PCR (94 °C, 3 min; 30 cycles: 94 °C, 1 min; 59.5 °C, 40 s; 72 °C, 2 min; and 72 °C, 5 min) from the PBM8 cDNA library (50 ng) by 5 units of *Pfu* DNA polymerase (Promega) using specific primers (LACEFLS3, 5'-GAATTGCTCGAGTCGACCCACGCGTCCG-3'; LACE-FLAS4, 5'-AAGTGGTAGAAAAATTATGAAATGACATAAAA-ATC-3') based on the sequence characterized by the procedure described in the Molecular characterization section. These primers were designed from sequences upstream of the stop codon in position –15, and downstream of the stop codon within the 3'-UTR (3'-untranslated region) respectively. Products were nested with LACEFLS4 (5'-CGCGTCCGGATGATTTTTTAAATGTTTTCG-3') and LACEFLAS4 under the same PCR conditions, subcloned

and sequenced as described above. Full-length *TtACE* cDNA was cloned into the *EcoRV* site of pcDNA3.1 plasmid (Invitrogen). The sequence of the obtained p*TtACE* construct was verified first by restriction profile and then by sequencing as described above, using pcDNA3 primers (sense, 5'-ACTACAGGGAGACCCAA-GC-3'; antisense, 5'-AGTCGAGGCTGATCAGCG-3') as well as internal *TtACE*-specific primers.

Expression

CHO-K1 cells were cultured on FB6 plates in Dulbecco's modified Eagle's medium (Gibco BRL) with serum until 85–90% confluent. Cells were stably transfected with 1 μ g of p*TtACE* per well using LIPOFECTAMINE™ 2000 reagent (Invitrogen) according to the manufacturer's instructions, and were selected for resistance to Geneticin. Individual resistant colonies producing large amounts of *TtACE* were cloned by limiting dilution techniques as described previously [4].

Immunological characterization of recombinant *TtACE*

Secreted recombinant *TtACE* was obtained from the culture medium of transfected CHO cells grown for 2 days in serum-free medium (ULTRA CHO). After concentration, the recombinant enzyme was analysed by SDS/PAGE, followed by Western-blot analysis. To characterize the *TtACE* enzyme, a rabbit antiserum (TtAb1) was raised against a peptide corresponding to the sequence 403–417 (HEAIADIASLSVATP). The peptide and antisera were provided by Neosystem (Strasbourg, France).

Enzymic assays

ACE activity was measured using different substrates. Hip-His-Leu (HHL; 5 mM; Hip, Hippuryl) and AcSDAcKP (0.5 mM; where Ac is *N*-acetyl) were used as human C- and N-domain-specific substrates respectively [32,33]. Ang I (25 μ M) was used as both a human C- and N-domain substrate and HHL-NH₂ (5 mM) as an amidated substrate.

Assays were performed at 37 °C with 25 μ l of *TtACE* culture medium for 30 or 60 min. The rate of hydrolysis of all substrates used was resolved and quantified by reverse HPLC (Waters, Milford, MA, U.S.A.). The specificity of the reaction was confirmed in the presence of 1 μ M of the ACE inhibitor, lisinopril. The effect of chloride on HHL hydrolysis was determined under standard conditions with NaCl concentrations ranging from 0 to 1000 mM. Activity of *TtACE* was compared with that of the N- or C-domain of human ACE, as described previously [4].

Inhibition of Mca-ASDK-DpaOH hydrolysis by various ACE inhibitors

Inhibition studies were performed with Mca-ASDK-DpaOH [where Mca stands for (7-methoxycoumarin-4-yl)acetyl- and DpaOH stands for *N*³(2,4-dinitrophenyl)L-2,3-diaminopropionyl-OH] as a fluorescent ACE substrate, as described previously [34]. Assays were performed by recording fluorescence at 390 nm.

The potency of captopril and delaprilat for the inhibition of Mca-ASDK-DpaOH hydrolysis by recombinant *TtACE* was determined by establishing dose-dependent inhibition curves at equilibrium. The compounds were preincubated with *TtACE* for 1 h and reactions were initiated by the addition of 12 μ M of substrate.

To compare the effects of these inhibitors, the same dose-dependent curves were studied with recombinant C- and N-sites of human ACE.

Inhibition of Mca-ASDK-DpaOH hydrolysis by ACE mAb (monoclonal antibody)

mAb i₂H₅ (a gift from Dr S. Danilov, Department of Chemistry, Moscow State University, Russia), an mAb raised against purified human lung ACE, recognizes epitopes in the N-terminal domain of ACE and inhibits the enzymic activity of the N-terminal active site only [35]. The inhibitory potency of mAb i₂H₅ towards the recombinant *TtACE* and C- and N-active sites of human ACE was determined by establishing dose-dependent inhibition curves.

Northern-blot analysis

Total RNA was extracted as described above, and was poly(A)⁺ (polyadenylated)-enriched using oligo(dT) resin-affinity chromatography. Poly(A)⁺ RNA (10 μ g) from stage 2 leeches was subjected to Northern-blot analysis as described by Breton et al. [36]. A [³²P]dCTP-radiolabelled 280-bp cDNA probe corresponding to nt 1426–1705 of *TtACE* cDNA sequence was generated with the Ready-to-go labelling kit (Amersham Biosciences). Nylon membranes were hybridized overnight at 42 °C and washed [final stringency conditions were 0.5 \times sodium citrate and 0.1% (w/v) SDS; 45 °C for 15 min]. Autoradiograms (Kodak) were visualized after exposure for 16 h at room temperature (20 °C).

Multiplex semi-quantitative PCR

Semi-quantification of *TtACE* expression was performed using the multiplex relatively quantitative RT-PCR validated method [37,38]. The constitutively expressed housekeeping gene, β -actin, was used as an internal standard (the sequence data for *T. tessulatum* is available at the GenBank® database under the accession no. CK640381). β -Actin primers (AcF, 5'-GATCTGGCA-TCACACCTTCTACAA-3'; AcR, 5'-GTTGAAGGTCTCGA-ACATGATCTG-3') were kindly provided by Dr C. Lefebvre (Laboratoire de Neuroimmunologie des Annélides, University of Lille 1). cDNA from stage 1 ($n=10$), stage 2 ($n=10$) and stage 3 ($n=8$) leeches were obtained by the method described above. They were used as templates in 27-cycle PCRs. Previous experiments have allowed us to determine that 27 cycles correspond to the number of reaction steps required for the maximal exponential amplification phase of β -actin before reaching the plateau phase (results not shown). Each tube contained the following mixture: 50 ng of cDNA; 2 pmol each of the primers LACCESS1 and LACESAS1, as well as AcF and AcR; 20 μ M dNTPs; 1 unit of *Taq* DNA polymerase; MgCl₂ in an appropriate buffer and water to a final volume of 50 μ l. PCR cycling conditions were 94 °C, 3 min; 27 cycles: 94 °C, 40 s; 52 °C, 1 min; 72 °C, 1 min. Negative and positive controls were performed on water and 50 ng of pBM8 stage 2 cDNA library respectively. Products were resolved by 2% agarose-gel electrophoresis, stained with ethidium bromide as described above and digitally photographed under UV light (312 nm). Absorbance was analysed with the Claravision system v5.1 (Claravision Perfect Image software and Claravision Gel Analyst software; Claravision, Orsay, France). Statistical analysis was performed using unpaired Student's *t* test.

In situ hybridization

Cellular localization of *TtACE* mRNA synthesis was investigated by *in situ* hybridization on stage 2 and stage 3 leeches. Leeches were fixed overnight in 0.1 M phosphate buffer containing 4% (w/v) paraformaldehyde (pH 7.4). After dehydration, animals were embedded in paraplast and 7 μ m sections were cut, mounted on poly(L-lysine)-coated slides and stored at 4 °C until use. The

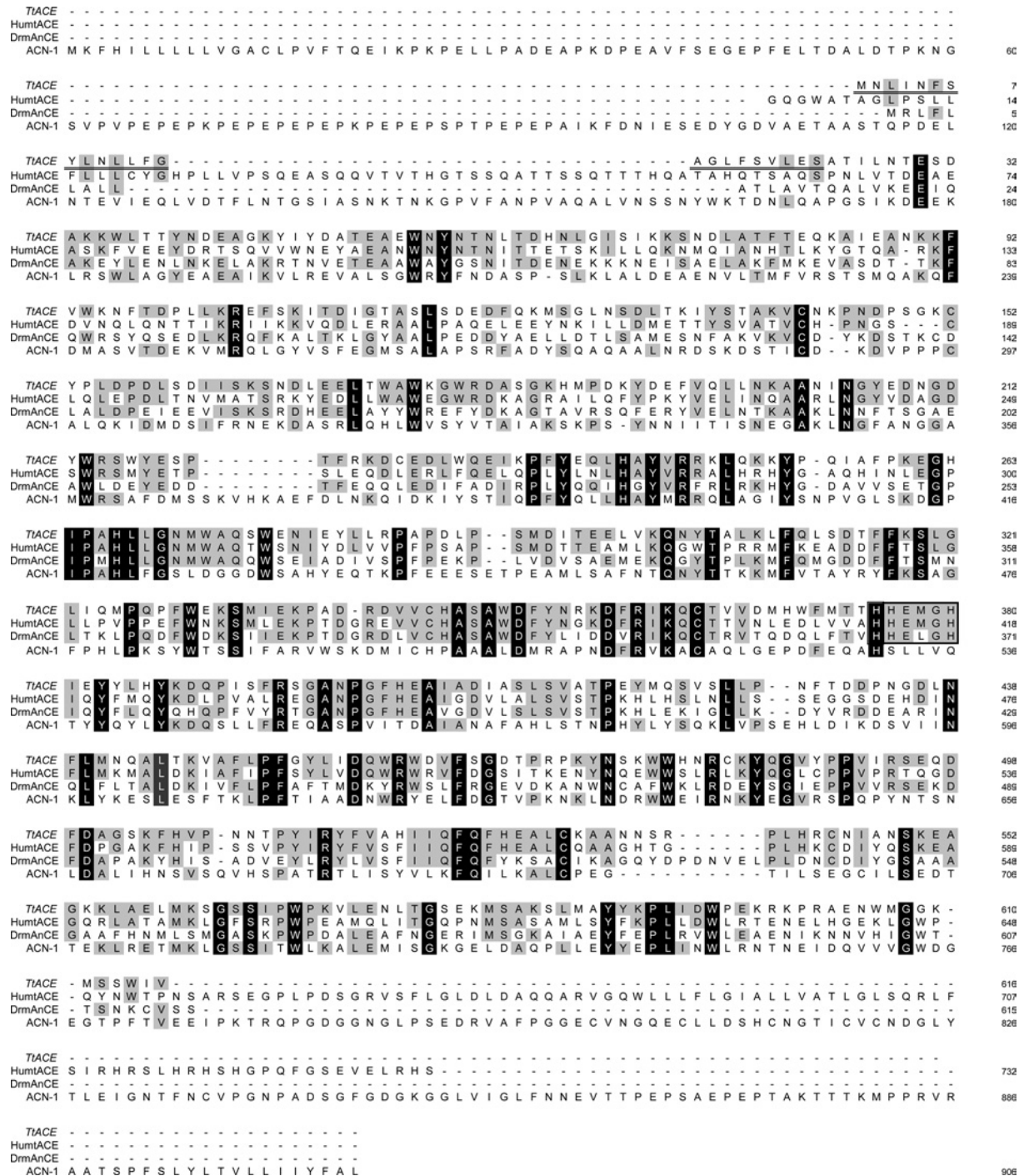


Figure 1 Amino acid sequence alignment between *TtACE* and ACEs of various species

This alignment was obtained *in silico* using Clustal W software (available at <http://www.ebi.ac.uk/clustalw/>). *HumtACE*, *H. sapiens* C-domain ACE (GI: 113041); *DrmAnCE*, *D. melanogaster* AnCE (GI: 26006940); *ACN-1*, *C. elegans* ACE-like non-peptidase 1 (GI: 25151555). Amino acids are numbered on the right side of the first methionine residue. Dashes represent gaps. The residues identical between all sequences are shown in white within black boxes. The conserved amino acids with regard to *TtACE* are shaded grey. The M2 active site is boxed. *TtACE* putative signal peptide is underlined.

labelled, approx. 1 kb, cRNA probe was obtained from the library by PCR using the primers LACCESS1 and dT adapter. The cDNA fragment (nt 1123–1848 and a part of the 3'-UTR) was cloned in pGEM-T easy (Promega) and sequenced as described above. [³⁵S]UTP-labelled antisense and sense riboprobes were generated

from linearized cDNA plasmids by *in vitro* transcription using SP6/T7 RNA-labelling kit (Roche). ³⁵S-labelled riboprobes (100 ng or 1 × 10⁶ c.p.m./slide) were hybridized as described previously [39]. Slides were observed under a Zeiss Axioscope microscope. The control consisted of replacing the antisense

riboprobe with a sense riboprobe. RNase control sections were obtained by adding a preincubation step with 10 mg/ml RNase A before hybridization.

RESULTS

Molecular characterization

Using a PCR approach, we cloned an approx. 2 kb cDNA fragment presenting a 1848 bp ORF (open reading frame). This ORF possesses a transcription start (position 1), is delimited by two in-frame 5'- and 3'-stop codons (positions -15 and 1849 respectively) and a putative polyadenylation signal in the 3'-UTR. This ORF corresponds to the putative 616-amino-acid leech enzyme (GenBank® accession no. AY560004). It contains the zinc-binding motif HEXXH (positions 376–380) and the putative third zinc ligand, a glutamic residue located 24 amino acids downstream of the second histidine residue of this motif (position 403). Hydrophobicity predictions (SignalP V1.1, available at <http://www.cbs.dtu.dk/services/SignalP>) suggested post-translational cleavage of a signal peptide between residues 23 and 24 (SVLES↓ATIL). The deduced primary sequence revealed that, in agreement with what has been found in invertebrates, the enzyme did not seem to contain a C-terminal transmembrane domain. Moreover, the PROSCAN bioinformatics prediction tool program (available at <http://cbs.dtu.dk/services/NetNGlyc/>) emphasized the presence of six potential N-glycosylation sites. The *in silico* glycosylphosphatidylinositol-anchor-site prediction tool (big-PI Predictor, available at http://mendel.imp.univie.ac.at/gpi/cgi-bin/gpi_pred.cgi) [40] did not detect any pattern likely to undergo such a modification in the *TtACE* primary sequence. Taken together, these results suggested that *TtACE* might only exist under a soluble form. Subsequently, after the signal peptide cleavage and assuming that all potential sites had undergone N-glycosylation, the predicted molecular mass of mature *TtACE* was approx. 78 kDa. Interestingly, its amino acid sequence showed greater similarity to vertebrate than to invertebrate enzymes [53% identity with *Gallus gallus* ACE (GI: 1703072), 47 and 48% identity with *Homo sapiens* N- and C-domains respectively (GI: 37790804) and 39% identity with *D. melanogaster* AnCE (GI: 26006940) according to the BLAST server (<http://www.ncbi.nlm.nih.gov/blast/bl2seq/bl2.html>)] [41]. Its primary sequence indicated that *TtACE* bore every functional residue at conserved positions for zinc ions (His³⁷⁶ and His³⁸⁰), chloride ions (Arg¹⁸⁰, Tyr²¹⁸, Trp⁴⁷⁸, Arg⁴⁸ and Arg⁵¹⁵) and lisinopril (His³⁴⁶, Ala³⁴⁷, Glu³⁷⁷, Lys³⁰⁴, His⁵⁰⁶, Tyr⁵¹ and Tyr⁵¹⁷) binding when compared with human tACE [41,42] (Figure 1). Using the same approach, we cloned partial cDNA and found the existence of an ACE-like enzyme in all of the water-living annelid species examined, including non-parasitic (*Erpobdella octoculata*, *Nereis diversicolor*) as well as parasitic species (*Hirudo medicinalis*). The characterized sequences were all highly conserved in these species (i.e. more than 70% homology in nucleotides) whether parasitic or not (results not shown). It is noteworthy that, although all other known ACE sequences of the animal kingdom present a glutamic residue at position 6 after the last histidine of the zinc-binding motif HEXXH (according to the MEROPS database release 6.3, available at <http://merops.sanger.ac.uk>), a histidine residue was identified at this position in every annelid ACE sequence.

Biochemical characterization of recombinant *TtACE*

Expression of secreted *TtACE* in CHO cells

Culture medium of recombinant stable CHO cells was analysed by SDS/PAGE followed by Western-blot analysis. Recombinant

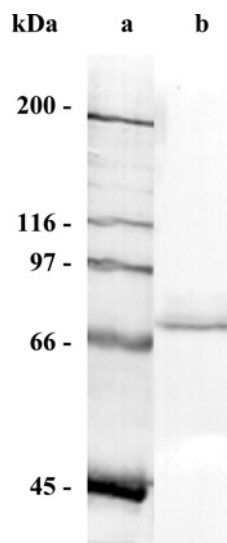


Figure 2 Western-blot analysis of recombinant *TtACE*

TtACE expressed in CHO cells was analysed by SDS/PAGE, followed by Western-blot analysis with the antiserum TtAb1. Lane a, molecular-mass standards; lane b, recombinant *TtACE*.

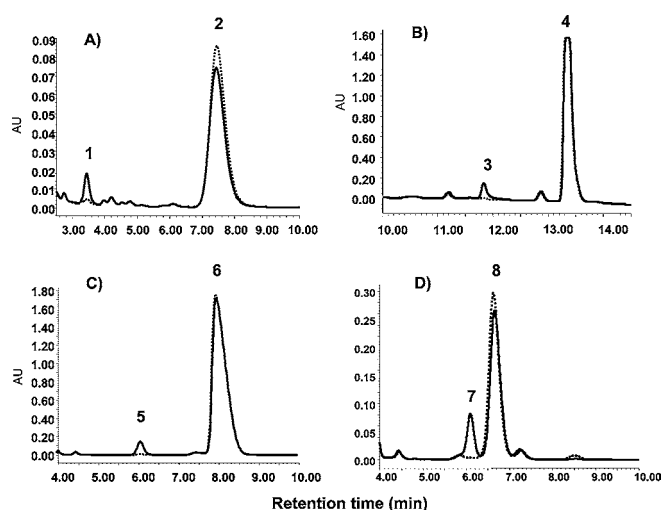


Figure 3 Hydrolysis of Ang I, AcSDAcKP, HHL and HHL-NH₂ by *TtACE*

Profiles are as follows: (A) Ang I (peak 2), Ang II (peak 1); (B) AcSDAcKP (peak 4), AcKP (peak 3); (C) HHL (peak 6), hippuric acid (peak 5); and (D) HHL-NH₂ (peak 8), hippuric acid (peak 7). Inhibition of *TtACE* activity by 1 μM lisinopril is indicated (.....).

TtACE migrated with an apparent molecular mass of 79 kDa (Figure 2).

Enzymic properties of recombinant *TtACE*

The enzymic activity of recombinant *TtACE* was studied using the mammalian ACE substrate Ang I and two synthetic substrates, specific to the N- and the C-domain active sites of ACE, namely AcSDAcKP and HHL respectively. Recombinant *TtACE* hydrolysed the three substrates, as shown by HPLC analysis (Figures 3A–3C). *TtACE* hydrolysed HHL-NH₂, a substrate with a blocked C-terminus (Figure 3D). All these hydrolyses were fully inhibited by 1 μM lisinopril.

Since chloride dependence of HHL hydrolysis is a good index of the N- or C-domain property of the active sites of ACE, *TtACE*

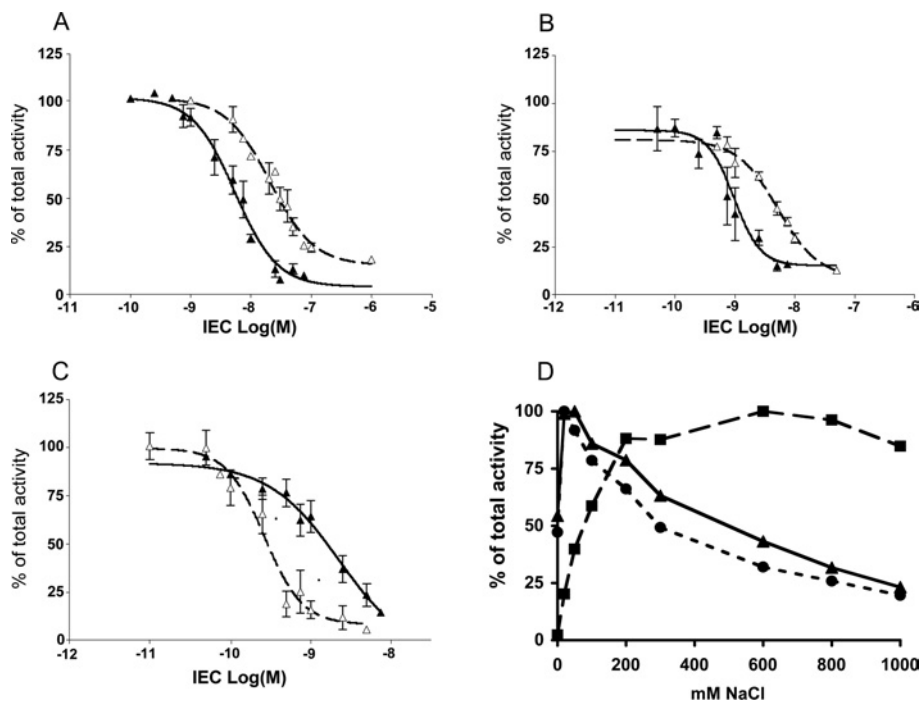


Figure 4 Inhibitory effects of various ACE inhibitors on the hydrolysis of HHL by recombinant *TtACE*

Effects of captopril (▲) and delaprilat (△) on recombinant *TtACE* (A) and the N- (B) or C-terminal (C) functional active sites of human ACE. Results are expressed as the means for three experiments. (D) Effects of various chloride concentrations on the hydrolysis of HHL by recombinant *TtACE* (▲) and the N- and C-domains of human ACE (● and ■ respectively). Recombinant *TtACE* from culture medium was dialysed against distilled water and various chloride concentrations were added to aliquots of the dialysed medium. Activity of ACE towards HHL was determined and compared with that of the single active-site N- and C-domains of ACE as described in [4].

activity under different chloride concentrations was assessed (Figure 4D). *TtACE* maximal activity was observed at 50 mM Cl^- concentration, similar to the single N-domain of human ACE.

Effect of two ACE inhibitors on *TtACE* activity

Inhibition of *TtACE* was studied using two mammalian ACE inhibitors selected for their ability to inhibit differentially either the N- or C-domain of human ACE, captopril and delaprilat respectively. *TtACE* was more potently inhibited by captopril ($\text{IC}_{50} = 5.5$ nM) than by delaprilat ($\text{IC}_{50} = 20.7$ nM), a result similar to that observed with the two human ACE domains (Figures 4A–4C). Finally, *TtACE* activity was inhibited by mAb i_2H_5 in a manner similar to human N-domain (result not shown).

mRNA expression

Results of Northern-blot analysis showed the existence of a major transcript of approx. 3 kb and a minor one migrating with an apparent molecular mass of 4.2 kb (Figure 5A). Performing multiplex semi-quantitative RT-PCR experiments using β -actin as an internal standard, we found variable amounts of ACE mRNA at all stages (stages 1–3) of the leech's life cycle (Figure 5B). *TtACE* mRNA was present from stage 1 and its expression level was similar at stages 1 and 2. However, a lower mRNA expression level was detected at stage 3, as assessed by fluorescence analysis of agarose gels (Figure 5C).

Cellular localization

After *in situ* hybridization analysis of the whole body, *TtACE* mRNA labelling was exclusively observed in the epithelial cells

of the midgut from stage 2 leeches (Figure 6). No labelling could be detected in stage 3 animals or in any other tissue, e.g. the reproductive tract.

DISCUSSION

The present study brings molecular evidence for the existence of a functional ACE-like enzyme in non-insect invertebrates. It describes the first cloning of cDNA and the biochemical activity and distribution of an ACE-like enzyme in the leech, *T. tessulatum*, named *TtACE*. To date, only biochemical data about ACE-like activities in these species are available [29,43]. Their cDNA structure has never been identified so far. The 1848-bp cDNA ORF of *TtACE* encodes a putative 616-amino-acid protein of 79 kDa. This protein does not possess a membrane anchor, contains a unique M2 catalytic active site and shares a common structure with ACE from insects. However, its amino acid sequence shows a higher homology with ACE from vertebrates, particularly with ACE from chicken. Since the leech, *T. tessulatum*, is the only Lophotrochozoa species in which an active ACE-like enzyme has been characterized at the molecular level, *TtACE* may help us to address numerous questions that remain to be answered.

One relevant point concerns phylogenetic and evolutive considerations, since *C. elegans* does not contain any functional ACE-like enzyme in its genome. Since *C. elegans* and arthropods belong to the Ecdysozoa group and *T. tessulatum* to the Lophotrochozoa, the present study brings evidence that appearance of a functional ACE-like protein occurs before or at the formation of the Bilateria (see Tree Of Life Web Project at <http://tolweb.org> and [28] for references). Interestingly, a non-peptidase ACE-like protein (ACN-1) has been identified in the *C. elegans* genome and has

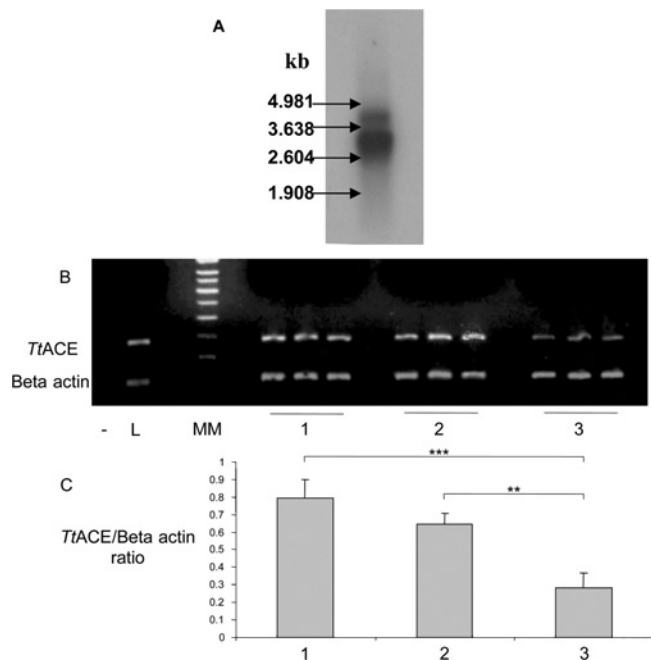


Figure 5 *TtACE* mRNA Northern-blot profile (A), multiplex semi-quantitative RT-PCR expression pattern during the life cycle (B) and the associated semi-quantification (C)

(A) kb, molecular-mass standards. (B) *TtACE*, 281 bp amplicon corresponding to *TtACE*; β -actin, 165 bp amplicon corresponding to β -actin. Lane -, negative control achieved using water instead of cDNA; lane L, positive control performed on a 50 ng pBM8 cDNA library; lane MM, 100 bp molecular-mass standards; lanes 1, 2 and 3, triplicate reactions on cDNA of stage 1, 2 and 3 animals respectively. The gel shown is representative of 28 experiments. (C) Semi-quantitative analysis of *TtACE* expression reported for β -actin expression. Agarose gels were digitally photographed with Claravision Perfect Image software v5.1 and analysed using the Claravision Gel Analyst software v5.1. The stage of the leech's life is indicated (stages 1–3) below the corresponding line. The *TtACE*/ β -actin signal ratio is expressed in arbitrary units and values are the means \pm S.E.M. for $n = 10$ (stage 1), $n = 10$ (stage 2) and $n = 8$ (stage 3) independent experiments. Statistical analysis was performed using unpaired Student's *t* test. ** $P < 0.01$; *** $P < 0.001$, compared with stage 1 *TtACE*/ β -actin ratio.

very recently been demonstrated to play a key role in development [27]. However, the reason why the *C. elegans* enzyme lost its protease activity remains to be elucidated. In any case, our results raise very interesting questions about the putative primitive and original functions of ACE-like enzymes in the animal kingdom. In view of the higher sequence homology between the isoforms from leeches and vertebrates than those identified in other non-annelid invertebrates, we speculated that this could be specific to the leech,

T. tessulatum, an aquatic-bird parasite. We thus decided to look for the presence of a 180-bp ACE cDNA fragment surrounding the active site in non-parasitic annelid species. The existence of such a cDNA fragment, which shows a great sequence identity with *TtACE* even in non-parasitic annelid species, indicates that an active ACE-like protease is present in all the annelids studied, and its presence does not seem to be dependent on parasitic biology. Altogether, our results indicated that annelids contain a presumably active ACE-like protein that includes an active site, possessing a higher sequence identity with ACE from vertebrates than with insects' enzymes. Interestingly enough, all the annelid ACE-like enzymes characterized possessed a specific histidine residue located six amino acids downstream of the zinc-binding motif. This amino acid seems to be unique to annelids since it is replaced by a glutamic residue in all the biologically active ACE-like enzymes cloned so far. However, this conserved amino acid residue has not been demonstrated to play an important catalytic role in the active site of ACE as assessed by NMR and X-ray structural studies in human and *Drosophila* [42,44].

Biochemical studies of stably transfected CHO-K1 cells expressing *TtACE* showed that the cloned leech cDNA encoded a functional enzyme with a molecular mass of 79 kDa, as expected. Hydrolysis assays on various substrates showed that *TtACE* was capable of hydrolysing several mammalian ACE substrates, including a C-amidated substrate. In this respect, *TtACE*, similar to mammalian ACE, displayed an endopeptidase activity. It is interesting to note that the *TtACE* active-site characteristics were similar to the N-domain characteristics of ACE, such as (i) low chloride dependence on HHL hydrolysis, (ii) preferential inhibition by N-domain-type ACE inhibitor and (iii) preferential inhibition by an mAb specific to the N-domain. This shows that the N-domain characteristics of ACE are already present in a distant organism such as the leech.

To gain more insight into the physiological functions of *TtACE*, we compared its mRNA expression levels at different stages of the leech's life cycle. *TtACE* mRNA was detected at all the stages examined, but did not show any significant quantitative variation between stages 1 and 2 (i.e. after the first and the second blood meals respectively). In contrast, a remarkable decrease in the expression level of the *TtACE* gene occurred at stage 3 after the last blood meal. During the first two stages, the morphology of leeches was not markedly affected. Important diuretic mechanisms took place, leading to concentration of the host's blood cells. In contrast, the last blood meal induced drastic morphological and physiological changes such as a significant weight increase and induction of sexual maturation. Thus the expression level of *TtACE* was the lowest when digestion and ovogenesis were completed,

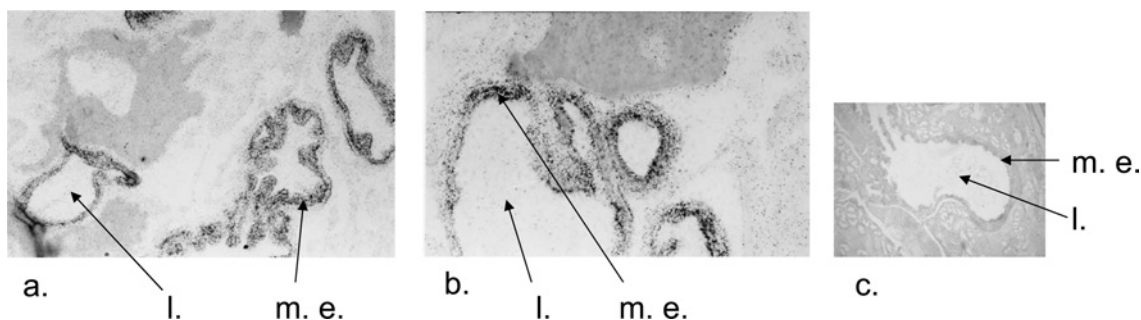


Figure 6 Microphotographs of stage 2 *T. tessulatum* sections after *in situ* hybridization

Radiolabelling is visible as black dots. (a) Antisense riboprobe, magnification $\times 20$; (b) antisense riboprobe, magnification $\times 40$; (c) sense riboprobe, magnification $\times 20$; m.e., midgut epithelium; l., midgut lumen.

suggesting a potential role of the ACE from leech in these functions.

Surprisingly, *TtACE* mRNA expression was not detected in the reproductive system, but seemed to be restricted to midgut epithelial cells. Although ACE mRNA has already been shown to be expressed in the locust and dipteran midgut, proteases from insects, in contrast with *TtACE*, exhibit a wide tissue distribution. The physiological role and the endogenous substrates of ACE from invertebrates in the midgut remain to be elucidated, although the high levels of ACE activity in midgut tissues of Diptera have led to speculations about a digestive role for ACE [19], which is consistent with our findings. As far as we know, the ACE from invertebrates is clearly known to control only developmental and reproductive functions [17–26]. For example, the *AnCE* gene, whose genetic invalidation leads to a lethal phenotype [17], is expressed in the spermatocytes and spermatids of *Drosophila* [24]. Interestingly, in the mosquito *Anopheles stephensi*, an ACE is induced by a blood meal, but accumulates secondarily in the developing ovary [26], suggesting that the reproductive function of the enzyme is under a dietary influence. Recently, using the grey fleshfly *Neobellieria bullata* as a model, it has been shown that ovarian ACE could be involved in the proteolysis of yolk proteins, suggesting that it may be a regulator of vitellogenic and developmental processes [45,46]. Our results did not support the role of *TtACE* in the latter processes, but indicated that the soluble enzyme could be secreted within the digestive tract and acts as a final degrading enzyme of the proteic nutrients. However, we cannot rule out that a minor mRNA expression of *TtACE* might have occurred outside the midgut tissues, but was not detected by *in situ* hybridization. Alternatively, as in *Drosophila*, *T. tessulatum* may express different ACE genes that could present distinct cellular distributions. Furthermore, Northern-blot analysis of *TtACE* displayed two bands, suggesting either alternative splicing of *TtACE* mRNA or expression of a close ACE-related gene. Nevertheless, further experiments will be needed to clarify this issue.

Comprehension of the physiological roles of *TtACE* will require the molecular characterization of its endogenous substrates and/or its potential inhibitors. Although the amount of biochemical and molecular data on ACE-like enzymes from invertebrates is increasing rapidly, little is known concerning their *in vivo* targets. Understanding these functions in invertebrates could provide new, interesting information on the roles of these ancestral peptidases.

We are grateful to A. Desmond and S. Ruault for their excellent technical assistance. We thank Professor C. Denorme (CUEPP, Université des Sciences et Technologies de Lille) for a critical reading of this paper. This study was partially supported by a grant from Conseil Régional du Nord-Pas de Calais (Lille cedex, France), by Institut National pour la Santé et la Recherche Médicale and by Centre National de la Recherche Scientifique (Paris, France).

REFERENCES

- Corvol, P., Williams, T. A. and Soubrier, F. (1995) Peptidyl dipeptidase A: angiotensin-I converting enzyme. In *Methods in Enzymology* (Barrett, A. J., ed.), pp. 283–305, Academic Press, London.
- Turner, A. J. and Hooper, N. M. (2002) The angiotensin-converting enzyme gene family: genomics and pharmacology. *Trends Pharmacol. Sci.* **23**, 177–183.
- Hubert, C., Houot, A. M., Corvol, P. and Soubrier, F. (1991) Structure of the angiotensin I-converting enzyme gene. Two alternate promoters correspond to evolutionary steps of a duplicated gene. *J. Biol. Chem.* **266**, 15377–15383.
- Wei, L., Alhenc-Gelas, F., Corvol, P. and Clauser, E. (1991) The two homologous domains of human angiotensin I-converting enzyme are both catalytically active. *J. Biol. Chem.* **266**, 9002–9008.
- Rousseau, A., Michaud, A., Chauvet, M. T., Lenfant, M. and Corvol, P. (1995) The hemoregulatory peptide *N*-acetyl-Ser-Asp-Lys-Pro is a natural and specific substrate of the N-terminal active site of human angiotensin-converting enzyme. *J. Biol. Chem.* **270**, 3656–3661.
- Deddish, P. A., Marcic, B., Jackman, H. L., Wang, H. Z., Skidgel, R. A. and Erdos, E. G. (1998) N-domain-specific substrate and C-domain inhibitors of angiotensin-converting enzyme: angiotensin-(1–7) and keto-ACE. *Hypertension* **31**, 912–917.
- Eyries, M., Michaud, A., Deinum, J., Agrapart, M., Chomilier, J., Kramers, C. and Soubrier, F. (2001) Increased shedding of angiotensin-converting enzyme by a mutation identified in the stalk region. *J. Biol. Chem.* **276**, 5525–5532.
- Oppong, S. Y. and Hooper, N. M. (1993) Characterization of a secretase activity which releases angiotensin-converting enzyme from the membrane. *Biochem. J.* **292**, 597–603.
- Parkin, E. T., Trew, A., Christie, G., Faller, A., Mayer, R., Turner, A. J. and Hooper, N. M. (2002) Structure-activity relationship of hydroxamate-based inhibitors on the secretases that cleave the amyloid precursor protein, angiotensin converting enzyme, CD23, and pro-tumor necrosis factor- α . *Biochemistry* **41**, 4972–4981.
- Parvathy, S., Oppong, S. Y., Karran, E. H., Buckle, D. R., Turner, A. J. and Hooper, N. M. (1997) Angiotensin-converting enzyme secretase is inhibited by zinc metalloprotease inhibitors and requires its substrate to be inserted in a lipid bilayer. *Biochem. J.* **327**, 37–43.
- Esther, C. R., Marino, E. M., Howard, T. E., Machaud, A., Corvol, P., Capecchi, M. R. and Bernstein, K. E. (1997) The critical role of tissue angiotensin-converting enzyme as revealed by gene targeting in mice. *J. Clin. Invest.* **99**, 2375–2385.
- Esther, Jr, C. R., Howard, T. E., Marino, E. M., Goddard, J. M., Capecchi, M. R. and Bernstein, K. E. (1996) Mice lacking angiotensin-converting enzyme have low blood pressure, renal pathology, and reduced male fertility. *Lab. Invest.* **74**, 953–965.
- Donoghue, M., Hsieh, F., Baronas, E., Godbout, K., Gosselin, M., Stagliano, N., Donovan, M., Woolf, B., Robison, K., Jeyaseelan, R. et al. (2000) A novel angiotensin-converting enzyme-related carboxypeptidase (ACE2) converts angiotensin I to angiotensin 1–9. *Circ. Res.* **87**, E1–E9.
- Tipnis, S. R., Hooper, N. M., Hyde, R., Karran, E., Christie, G. and Turner, A. J. (2000) A human homolog of angiotensin-converting enzyme. Cloning and functional expression as a captopril-insensitive carboxypeptidase. *J. Biol. Chem.* **275**, 33238–33243.
- Komatsu, T., Suzuki, Y., Imai, J., Sugano, S., Hida, M., Tanigami, A., Muroi, S., Yamada, Y. and Hanaoka, K. (2002) Molecular cloning, mRNA expression and chromosomal localization of mouse angiotensin-converting enzyme-related carboxypeptidase (mACE2). *DNA Seq.* **13**, 217–220.
- Turner, A. J., Tipnis, S. R., Guy, J. L., Rice, G. and Hooper, N. M. (2002) ACEH/ACE2 is a novel mammalian metallo-carboxypeptidase and a homologue of angiotensin-converting enzyme insensitive to ACE inhibitors. *Can. J. Physiol. Pharmacol.* **80**, 346–353.
- Tatei, K., Cai, H., Ip, Y. T. and Levine, M. (1995) Race: a *Drosophila* homologue of the angiotensin converting enzyme. *Mech. Dev.* **51**, 157–168.
- Taylor, C. A., Coates, D. and Shirras, A. D. (1996) The *Acer* gene of *Drosophila* codes for an angiotensin-converting enzyme homologue. *Gene* **181**, 191–197.
- Wijffels, G., Fitzgerald, C., Gough, J., Riding, G., Elvin, C., Kemp, D. and Willadsen, P. (1996) Cloning and characterisation of angiotensin-converting enzyme from the dipteran species, *Haemotobia irritans exigua*, and its expression in the maturing male reproductive system. *Eur. J. Biochem.* **237**, 414–423.
- Cornell, M. J., Williams, T. A., Lamango, N. S., Coates, D., Corvol, P., Soubrier, F., Hohenseil, J., Lehrach, H. and Isaac, R. E. (1995) Cloning and expression of an evolutionary conserved single-domain angiotensin converting enzyme from *Drosophila melanogaster*. *J. Biol. Chem.* **270**, 13613–13619.
- Coates, D., Isaac, R. E., Cotton, J., Svitzer, R., Williams, T. A., Shirras, A., Corvol, P. and Dive, V. (2000) Functional conservation of the active sites of human and *Drosophila* angiotensin I-converting enzyme. *Biochemistry* **39**, 8963–8969.
- Crackower, M. A., Sarao, R., Oudit, G. Y., Yagil, C., Koziarzdzki, I., Scanga, S. E., Oliveira-dos-Santos, A. J., da Costa, J., Zhang, L., Pei, Y. et al. (2002) Angiotensin-converting enzyme 2 is an essential regulator of heart function. *Nature (London)* **417**, 822–828.
- Quan, G. X., Mita, K., Okano, K., Shimada, T., Ugajin, N., Xia, Z., Goto, N., Kanke, E. and Kawasaki, H. (2001) Isolation and expression of the ecdysteroid-inducible angiotensin-converting enzyme-related gene in wing discs of *Bombix mori*. *Insect Biochem. Mol. Biol.* **31**, 97–103.
- Hurst, D., Rylett, C. M., Isaac, R. E. and Shirras, A. D. (2003) The *Drosophila* angiotensin-converting enzyme homologue *Ance* is required for spermiogenesis. *Dev. Biol.* **254**, 238–247.
- Zhu, W., Vandingenen, A., Huybrechts, R., Baggerman, G., De Loof, A., Poulos, P., Velenza, A. and Breuer, M. (2001) *In vitro* degradation of the Neb-Trypsin modulating oostatic factor (Neb-TMOF) in gut luminal content and hemolymph of the grey fleshfly, *Neobellieria bullata*. *Insect Biochem. Mol. Biol.* **31**, 87–95.

- 26 Ekbote, U., Coates, D. and Isaac, R. E. (1999) A mosquito (*Anopheles stephensi*) angiotensin I-converting enzyme (ACE) is induced by a blood meal and accumulates in the developing ovary. *FEBS Lett.* **455**, 219–222
- 27 Brooks, D. R., Appleford, P. J., Murray, L. and Isaac, R. E. (2003) An essential role in moulting and morphogenesis of *Caenorhabditis elegans* for ACN-1: a novel member of the angiotensin-converting enzyme family that lacks a metallopeptidase active site. *J. Biol. Chem.* **278**, 53240–53246
- 28 Nielsen, C. (2001) *Animal Evolution: Interrelationships of the Living Phyla*, 2nd edn, Oxford University Press, Oxford
- 29 Laurent, V. and Salzet, M. (1996) Biochemical properties of the angiotensin-converting-like enzyme from the leech *Theromyzon tessulatum*. *Peptides* **17**, 737–745
- 30 Vandenbulcke, F., Laurent, V., Verger-Bocquet, M., Stefano, G. B. and Salzet, M. (1997) Biochemical identification and ganglionic localization of leech angiotensin-converting enzymes. *Brain Res. Mol. Brain Res.* **49**, 229–237
- 31 Malecha, J. (1983) Osmoregulation in Hirudinea Rhynchobdellida *Theromyzon tessulatum* (OFM). Experimental localization of the secretory zone of a regulation factor of water balance. *Gen. Comp. Endocrinol.* **49**, 344–351
- 32 Azizi, M., Massien, C., Michaud, A. and Corvol, P. (2000) *In vitro* and *in vivo* inhibition of the 2 active sites of ACE by omapatrilat, a vasopeptidase inhibitor. *Hypertension* **35**, 1226–1231
- 33 Wei, L., Alhenc-Gelas, F., Soubrier, F., Michaud, A., Corvol, P. and Clauser, E. (1991) Expression and characterization of recombinant human angiotensin I-converting enzyme. Evidence for a C-terminal transmembrane anchor and for a proteolytic processing of the secreted recombinant and plasma enzymes. *J. Biol. Chem.* **266**, 5540–5546
- 34 Dive, V., Cotton, J., Yiotakis, A., Michaud, A., Vassiliou, S., Jiracek, J., Vazeux, G., Chauvet, M. T., Cuniasse, P. and Corvol, P. (1999) RXP 407, a phosphinic peptide, is a potent inhibitor of angiotensin I converting enzyme able to differentiate between its two active sites. *Proc. Natl. Acad. Sci. U.S.A.* **96**, 4330–4335
- 35 Danilov, S., Jaspard, E., Churakova, T., Towbin, H., Savoie, F., Wei, L. and Alhenc-Gelas, F. (1994) Structure-function analysis of angiotensin I-converting enzyme using monoclonal antibodies. Selective inhibition of the amino-terminal active site. *J. Biol. Chem.* **269**, 26806–26814
- 36 Breton, C., Pechoux, C., Morel, G. and Zingg, H. H. (1995) Oxytocin receptor messenger ribonucleic acid: characterization, regulation, and cellular localization in the rat pituitary gland. *Endocrinology* **136**, 2928–2936
- 37 Wei, Q., Bondy, M. L., Mao, L., Gaun, Y., Cheng, L., Cunningham, J., Fan, Y., Bruner, J. M., Yung, W. K., Levin, V. A. et al. (1997) Reduced expression of mismatch repair genes measured by multiplex reverse transcription-polymerase chain reaction in human gliomas. *Cancer Res.* **57**, 1673–1677
- 38 Wong, H., Anderson, W. D., Cheng, T. and Riabowol, K. T. (1994) Monitoring mRNA expression by polymerase chain reaction: the 'primer-dropping' method. *Anal. Biochem.* **223**, 251–258
- 39 Mitta, G., Vandenbulcke, F., Noel, T., Romestand, B., Beauvillain, J. C., Salzet, M. and Roch, P. (2000) Differential distribution and defence involvement of antimicrobial peptides in mussel. *J. Cell Sci.* **113**, 2759–2769
- 40 Eisenhaber, B., Bork, P. and Eisenhaber, F. (1999) Prediction of potential GPI-modification sites in proprotein sequences. *J. Mol. Biol.* **292**, 741–758
- 41 Combet, C., Blanchet, C., Geourjon, C. and Deleage, G. (2000) NPS@: network protein sequence analysis. *Trends Biochem. Sci.* **25**, 147–150
- 42 Natesh, R., Schwager, S. L., Sturrock, E. D. and Acharya, K. R. (2003) Crystal structure of the human angiotensin-converting enzyme-lisinopril complex. *Nature (London)* **421**, 551–554
- 43 Kawamura, T., Oda, T. and Muramatsu, T. (2000) Purification and characterization of a dipeptidyl carboxypeptidase from the polychaete *Neanthes virens* resembling angiotensin I converting enzyme. *Comp. Biochem. Physiol. B Biochem. Mol. Biol.* **126**, 29–37
- 44 Kim, H. M., Shin, D. R., Yoo, O. J., Lee, H. and Lee, J. O. (2003) Crystal structure of *Drosophila* angiotensin I-converting enzyme bound to captopril and lisinopril. *FEBS Lett.* **538**, 65–70
- 45 Hens, K., Vandingenen, A., Macours, N., Baggerman, G., Karaoglanovic, A. C., Schoofs, L., De Loof, A. and Huybrechts, R. (2002) Characterization of four substrates emphasizes kinetic similarity between insect and human C-domain angiotensin-converting enzyme. *Eur. J. Biochem.* **269**, 3522–3530
- 46 Vandingenen, A., Hens, K., Baggerman, G., Macours, N., Schoofs, L., De Loof, A. and Huybrechts, R. (2002) Isolation and characterization of an angiotensin converting enzyme substrate from vitellogenic ovaries of *Neobellieria bullata*. *Peptides* **23**, 1853–1863

Received 30 March 2004/27 May 2004; accepted 3 June 2004

Published as BJ Immediate Publication 3 June 2004, DOI 10.1042/BJ20040522