

Direct Analysis and MALDI Imaging of Formalin-Fixed, Paraffin-Embedded Tissue Sections

R. Lemaire,[†] A. Desmons,[†] J. C. Tabet,[‡] R. Day,[§] M. Salzet,[†] and I. Fournier^{*†}

Laboratoire de Neuroimmunologie des Annélides, FRE-CNRS 2933, MALDI Imaging Team, Cité Scientifique, Université des Sciences et Technologies de Lille, 59650 Villeneuve d'Ascq, France, Synthèse, Structure et Fonction de Molécules Bioactives, UMR-CNRS 7613, Boite 45, Université Pierre et Marie Curie, 4 place Jussieu, 75252 Paris Cedex 05, France, and Département de Pharmacologie, Faculté de médecine, Université de Sherbrooke, Sherbrooke, Québec J1H 5N4, Canada

Received October 18, 2006

Formalin fixation, generally followed by paraffin embedding, is the standard and well-established processing method employed by pathologist. This treatment conserves and stabilizes biopsy samples for years. Analysis of FFPE tissues from biopsy libraries has been, so far, a challenge for proteomics biomarker studies. Herein, we present two methods for the direct analysis of formalin-fixed, paraffin-embedded (FFPE) tissues by MALDI-MS. The first is based on the use of a reactive matrix, 2,4-dinitrophenylhydrazine, useful for FFPE tissues stored less than 1 year. The second approach is applicable for all FFPE tissues regardless of conservation time. The strategy is based on *in situ* enzymatic digestion of the tissue section after paraffin removal. *In situ* digestion can be performed on a specific area of the tissue as well as on a very small area (microdigestion). Combining automated microdigestion of a predefined tissue array with either *in situ* extraction prior to classical nanoLC/MS-MS analysis or automated microspotting of MALDI matrix according to the same array allows the identification of both proteins by nanoLC-nanoESI and MALDI imaging. When adjacent tissue sections are used, it is, thus, possible to correlate protein identification and molecular imaging. These combined approaches, along with FFPE tissue analysis provide access to massive amounts of archived samples in the clinical pathology setting.

Keywords: MALDI • Imaging • FFPE • *in situ* enzymatic digestion

Introduction

Since its introduction in the mid 1980s,^{1–3} Matrix-assisted laser desorption/ionization (MALDI) mass spectrometry has become a powerful tool in biological research, especially in proteomics. Recently, Caprioli^{4–6} and other groups^{7–13} have developed MALDI techniques for direct tissue analysis and molecular imaging allowing the detection and localization of a large number of compounds directly from tissue sections in one acquisition. However, this novel MALDI application has only been successfully carried out on fresh frozen tissues, without fixation or tissue processing for conservation, except for ethanol fixation¹⁴ or in direct analysis on invertebrates.¹⁵ Nonetheless, a major source of tissue samples are formalin-fixed, paraffin-embedded (FFPE) tissues found in hospital libraries. Even if FFPE tissues are extensively used for histological, immunohistochemical, or ISH studies, such tissues have only been minimally studied for molecular information either on DNA or proteins. MALDI was already used to identify small nuclear polymorphisms (SNP) from DNA isolated from FFPE tissues.¹⁶

However, for protein identification from FFPE tissues, only approaches using either LC-MS/MS^{17–19} or 2D gels electrophoresis were mainly reported.^{20–22} These studies demonstrate that many proteins can be identified in profiling. They also shown that the same proteins can be identified independently of the conservation used, since identification is comparable for frozen and FFPE tissues.²² Recent reviews summarized the advancements in proteomics of FFPE tissues.^{23,24} However, LC-MS/MS and 2D gel electrophoresis on protein extracts did not provide anatomical localization data of these peptides/proteins. Potentiality of MALDI-MS direct analysis and imaging on FFPE tissues was not investigated. Currently, immunohistochemistry is the best technology which can provide such information. The drawback of this approach requires a priori knowledge of the protein/peptide candidates and the production and use of specific antibodies. Simultaneous localization of several proteins/peptides in one experiment is tedious, generally providing information on two to three markers at the same time. Thus, immunohistochemistry is more amendable for biomarker validation and less so for biomarker discovery.

Materials and Methods

Materials. Materials included α -cyano-4-hydroxycinnamic acid (HCCA), sinapinic acid (SA), 2,4-dinitrophenylhydrazine

* Corresponding author. E-mail: isabelle.fournier@univ-lille1.fr.

[†] Université des Sciences et Technologies de Lille.

[‡] Université Pierre et Marie Curie.

[§] Université de Sherbrooke.

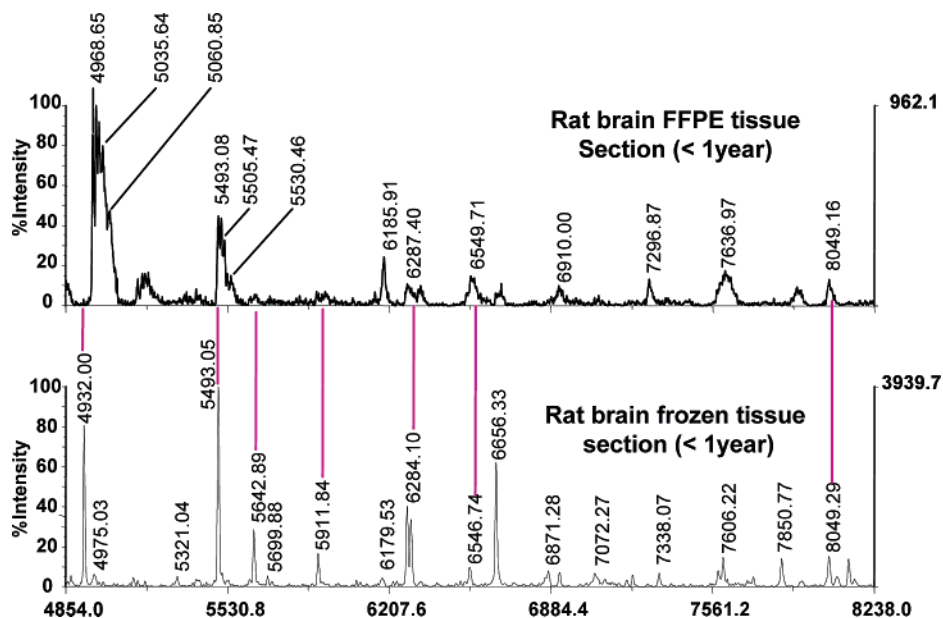


Figure 1. Comparison of MALDI mass spectra in the linear positive mode of the direct analysis of a <1 year old FFPE and fresh frozen rat brain tissues recorded in the same region with sinapinic acid as matrix (each experiment was conducted 5 times).

(DNPH), ammonium bicarbonate, Tris base, xylene, ethanol, Angiotensin II, Des-Arg-Bradykinin, Substance P, ACTH 18–39, ACTH 7–38, bovine Insulin (Sigma-Aldrich), trypsin (Promega), Asp-N and Lys-C endopeptidases (Roche), trifluoroacetic acid (Applied Biosystems), acetonitrile p.a., and methanol p.a. (J. T. Baker). Indium Teen Oxide (ITO)-coated glass slides were from Bruker Daltonique (Wisssembourg, France).

Tissue Fixation. Adult male Wistar rats weighing 250–350 g (animal welfare accreditation by the French ministry of the agriculture No. 04860) maintained under standard care were used. Five animals were sacrificed by decapitation and immediately dissected to remove the brain. Tissues were frozen at -80°C for good conservation. Formalin fixation was obtained according to classical procedures. Briefly, after dehydration in successive graduated ethanol baths, tissue was fixed with 4% formalin in Tris-HCL buffer, pH 7.4, for 24 h. Tissues were then embedded in paraffin using xylene and stored in a box at room temperature until use.²⁵

Tissue Dewaxing and Preparation. Tissue sections of $10\ \mu\text{m}$ were applied onto ITO-coated conductive glass slides. Paraffin was removed by 2 washes in xylene for 5 min and lightly rehydrated with a graded ethanol series (100%, 96%, and 70%) before drying at room temperature.²⁵

FFPE Tissues Stored for 6 Months. 2,4-Dinitrophenylhydrazine (2,4-DNPH) or a mix of 2,4-DNPH and HCCA was used as matrix. A total of 20–30 μL of the mix was applied onto the tissue using a micropipette and dried at room temperature.

FFPE Tissues Stored for 2 Years. For Direct Analysis: Several spots of 2 μL of enzyme (trypsin 0.033 $\mu\text{g}/\mu\text{L}$ in 25 mM Tris buffer, pH 7.4) were performed at different spots on the tissue to obtain representative proteins/peptides profile. Enzymatic digestion was performed at room temperature after covering the tissue section to decrease liquid evaporation. Every 10 min, enzyme was again deposited on the same spots. After final digestion, tissue was rinsed with 80% ethanol. Matrix (30 μL) was then applied on the tissue.

Functionalized Magnetic Beads Extraction of Peptides from Tissue. Extraction/purification of the sample was performed

using Clinprot purification (C8/C3) system from Bruker Daltonics according to the manufacturer's protocols adapted for the tissue.

For a section of $2\ \text{cm} \times 2\ \text{cm}$, after enzymatic digestion, 15 μL of binding solution was directly applied onto the tissue during 1 min, then 15 μL of magnetic bead was added on the slice. Extraction occurred during 10 min. During this step, beads and enzymatic results were mixed three times using a micropipette directly onto the tissue.

Then, digestion solution and beads were deposited into a polypropylene tube and washed three times using 500 μL of $\text{H}_2\text{O}/0.1\% \text{ TFA}$. Peptides were eluted with 30 μL of $\text{ACN}/\text{H}_2\text{O}-0.1\% \text{ TFA}$. MALDI/MS analysis can be performed after the resulting solution is mixed with MALDI matrix (HCCA, 10 mg, $\text{ACN}/\text{H}_2\text{O}-0.1\% \text{ TFA}$ (2:1 v/v)) or after solvent evaporation and dissolution in 10 μL of water.

For nanoLC-MS/MS identification, peptides were redissolved in $\text{H}_2\text{O}/\text{MEOH}-0.1\% \text{ formic acid}$ (9:1 v/v) after elution and evaporation.

For MALDI Imaging: Spots of enzyme (trypsin at 0.1 $\mu\text{g}/\mu\text{L}$ in 25 mM ammonium bicarbonate filtered in a $0.45\ \mu\text{m}$ Pall GxF/GHP filter) were performed using a high accurate position automatic microspotter (MALDI Sun Collect Spotter, Gmbh germany) operated with a 75 μm capillary column. Thus, the whole tissue section was microspotted with enzyme following a regular raster of spots of $\sim 300\ \mu\text{m}$ size. Flow rate was set after optimization to 300 nL/s, and 300 nL of trypsin was applied each second at different spots covering the surface of tissue. The program was repeated several times to increase time of digestion. A total of 300 nL of HCCA matrix was then spotted on the same spots as for the enzyme using the same program. No ethanol wash step was used between trypsin and HCCA in that case.

Mass Spectrometry. 1. MALDI-MS. MALDI-TOF mass spectra were performed on a Voyager-DE STR mass spectrometer (Applied Biosystems, Framingham, MA) with delayed extraction (DE) and a 337 nm pulsed nitrogen laser operating at 3 Hz and 2 ns pulse width. Either HCCA, SA, or 2,4-DNPH was used at

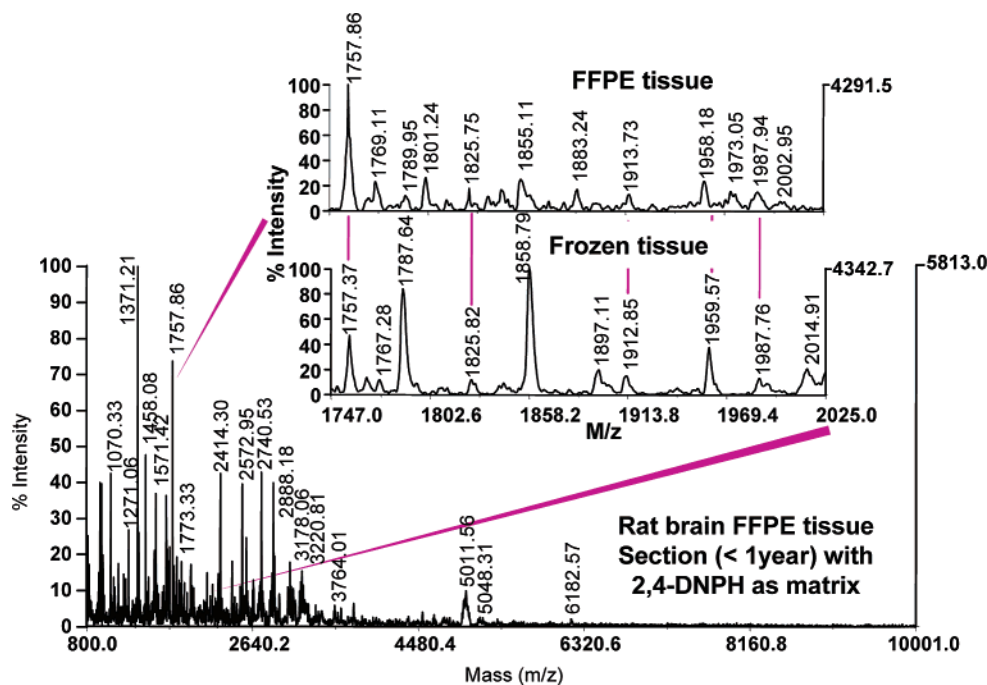


Figure 2. MALDI mass spectrum in the linear positive mode of the direct analysis of a <1 year old FFPE tissue using 2,4-DNPH as matrix. (Inset) Zooming compares this spectrum to the one recorded in the same conditions and in the same region of the rat brain of a fresh frozen tissue (each experiment was conducted 5 times).

concentrations of 10, 20, or 4 mg/mL, respectively, in ACN/0.1%TFA:H₂O (2:1, v/v). Matrices were applied onto the tissue using a micropipette (typically 20 μ L for a whole rat brain slice) and then dried at room temperature. External calibration was performed using a mixed solution of peptides (Bradykinin 1.6 μ M, Substance P 1.6 μ M, ACTH 18–39 1.6 μ M, ACTH 7–38 2 μ M, bovine Insulin 4.8 μ M, and bovine Ubiquitin 4.8 μ M in H₂O). Slices were visualized in the mass spectrometer using a color CCD camera (SONY). Each recorded mass spectrum resulted from the average of 200 laser shots on the area of interest. Acquisition parameters were set as follows: for HCCA and 2,4-DNPH matrices (mass range 500–10000), acceleration voltage, 25kV; first grid voltage, 94%; guide-wire voltage, 0.05%; extraction delay time, 200 ns.

2. MALDI-Imaging. For MALDI-IMS of fixed and paraffin-embedded tissues stored for 6 months, imaging was performed on an Ultraflex II TOF–TOF (Bruker Daltonics, Bremen, Germany). After a dewaxing step, images were obtained in positive linear mode using a mixture of HCCA and 2,4-DNPH (1:1, v/v). A total of 30 μ L of the mix was applied onto the tissue using a micropipette and dried at room temperature. Acquisition was realized using a 337 nm, pulsed nitrogen laser, with a repetition rate of 50 Hz. For image reconstruction, the Flex-Imaging v. 1.0.6.0 software (Bruker Daltonics, Bremen, Germany) was used. For positive mode, 12 000 points covering the whole slice with 100 laser shots per position were scanned. From each position, the software measures an average mass spectrum with its coordinates on the slice.

For MALDI-IMS of fixed and paraffin-embedded tissues stored for 2 years, imaging was performed on the voyager DE STR, using MALDI Imaging Tools (M. Stoeckli, Novartis, Switzerland) for image acquisition and reconstruction by screening 8000 points on the tissue section (30 shots averaged by position). Images were overlaid with the picture of the tissue slice before experiments using PaintShop Pro X software.

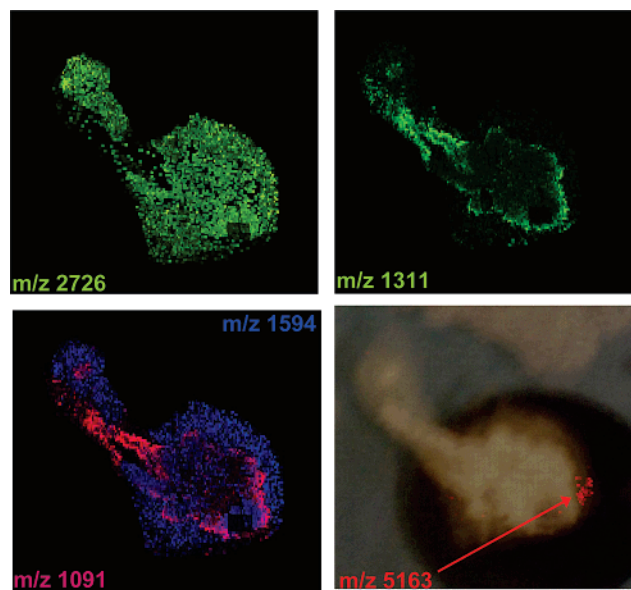


Figure 3. MALDI molecular images reconstructed from the data recorded on a <1 year old FFPE tissue performed on MALDI-TOF/TOF with a 2,4-DNPH and HCCA mix as matrix (each experiment was conducted 5 times).

3. MALDI–MS/MS. MALDI–MS/MS experiments of 2 years old FFPE tissue sections after *in situ* digestion of the whole tissue section was performed on an Ultraflex II TOF–TOF instrument (Bruker Daltonics, Bremen, Germany) equipped with LIFT III cell and smart beam laser with a repetition rate up to 200 Hz. For MS/MS experiments, parameters were set as follow: laser repetition rate was 100 Hz with 33% attenuation; ion source voltages were respectively 8 and 7.3 kV on MALDI sample plate and first electrode; LIFT cell was pulse from ground for electrode 1 and 2 to 19 kV, and in the last step,

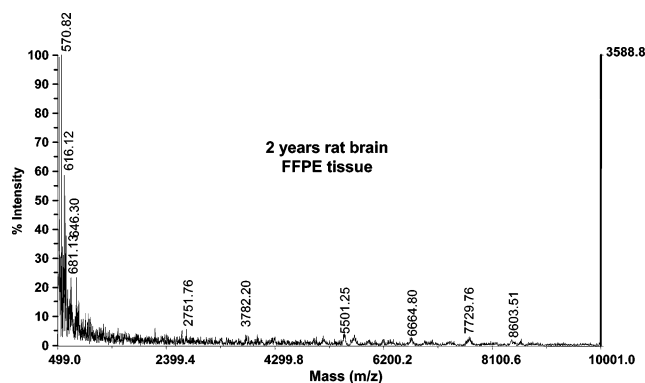


Figure 4. MALDI mass spectrum in the linear positive mode of the direct analysis of a >1 year old FFPE tissue (here 2 years) using sinapinic acid as matrix (each experiment was conducted 5 times).

electrode 3 was decreased to 3.2 kV; reflector end voltage was set to 29.5 kV and mid-grid to 13.85 kV. For MS/MS experiments, no collision gas was used. All protein identifications in databanks on the TOF–TOF instrument were performed using the Biotool 3.0 interface (Bruker Daltonics, Bremen, Germany) connected to Mascot search engine and interrogating the Swiss-Prot databank.

4. NanoRPLC–MS/MS. Analyses were performed on an ion trap mass spectrometer (LCQ deca XP plus, Thermo electron). For each run, 0.5 μ L of digest was injected with a Switchos Autosampler (Dionex Corporation) and separation performed on a reverse-phase C18 silica-bonded stationary phase (75 μ m i.d., 150 mm long, 3 μ m–100 Å pore size, Dionex Corporation). Samples were washed during 2 min at 10 μ L/min with 100% mobile phase A (95% H₂O, 5% ACN, and 0.1% formic acid). Peptides were eluted using a linear gradient of 1%/min mobile phase B (80% ACN, 20% H₂O, and 0.08% formic acid) during 70 min at a flow rate of 0.200 μ L/min. The LCQ was operated in a data-dependent MS/MS mode in which one MS full scan was followed by one MS/MS scan on the most abundant peptide molecular ion. Collision energy was set to 35%. The heated capillary temperature and electrospray voltage were 160 °C and 1.5 kV, respectively.

Protein identification was performed with the Mascot sequence query search program using the Swiss-Prot database filtered for the taxonomy “rattus”. A tolerance of 2 Da for peptide and 0.8 Da for MS/MS was fixed. Only protein sequences with MOWSE score higher than 32 (indicating significant homology or identity) and identified in several samples representing 2 significant MS/MS were considered. Methionine oxidation was defined as variable modification.

Results

Formalin fixation is known to induce methylene bridges between free amine groups, especially between amino groups of the lysine lateral chains or the N-terminal of proteins. The fixation process has also been described to continue during conservation of the sample. Thus, direct analysis and MALDI imaging were used in the present study in relation to conservation time of the tissue samples using rat brain FFPE tissue blocks as models.

In a first approach, FFPE tissues that were fixed for over 24 h and stored for less than 1 year were examined and compared to fresh frozen tissue samples in terms of spectra quality (i.e., signal intensity and resolution, signal-to-noise ratio, and mass

range) by direct MALDI analysis. Sinapinic acid (SA) and α -cyano 4-hydroxycinnamic acid (HCCA) matrices were both tested and results compared with those of frozen tissues. For both matrices, decreased signal intensity and number of peptides/proteins detected were observed in FFPE tissues. Loss of signal was especially important in the higher mass range and in particular using HCCA as matrix. The best results in terms of signal intensity and mass range were obtained using SA. A comparison of direct MALDI analysis of FFPE tissues versus frozen tissues (Figure 1) with SA as the matrix shows that the same ions are observed on both mass spectra, although the signal intensity is slightly lower for FFPE tissues and the relative peak intensities differ. A most striking observation appears in the peak shape, FFPE tissues present multiple overlapping peaks resulting in loss of resolution and difficulties in mass measurement, whereas frozen samples present classical single peak shapes and optimal resolution. Multiple peaks showed a repetition of +12 Da to the [M + H]⁺ ion generally observed (e.g., m/z 5493.08 and m/z 5505.47). The formation of these multiple peaks is directly connected to the process of formalin fixation and has previously been described.^{26,27} These adducts' formation can be explained by a mechanism described by Metz et al.²⁸ suggesting the formation of a Protein–N=CH₂ compound (with $\Delta M = 12$). FFPE tissues can be examined using direct MALDI analysis, but a decrease in signal intensity and resolution was observed. Protein cross-linking cannot be reversed resulting in observed difficulties. In addition, it is likely that nonreacted formalin molecules are also problematic for MALDI analysis.

Accordingly, we examined the possibility of neutralizing residual formalin molecules to improve the signal. In traditional analytical procedures, 2,4-DNPH was successfully used to detect the presence of ketone or aldehyde molecules in solution. Moreover, 2,4-DNPH was used as a MALDI matrix²⁹ by reacting with reactive functions and especially free aldehydes. Here, we show that 2,4-DNPH can be used as matrix for direct tissue analysis (Figure 2). When used on FFPE tissues, this matrix provides excellent results. A large in-signal intensity is observed for the m/z range corresponding to peptides greater than 5000 kDa, and the peak of adducts corresponding to protein–N=CH₂ ions is suppressed (Figure 2). Adducts' suppression allows for a much more precise m/z determination, and for peptide mass range, MALDI direct analysis performances are similar to those of frozen tissues. Even though methylene bridges are very strong links, it is still likely that the 2,4-DNPH is able to neutralize aldehydes which have not reacted with NH₂ groups, resulting in increased signal of the unreacted species. While 2,4-DNPH performs well on tissues, for higher masses, direct analysis remains difficult. One of the major obstacles for the use of this matrix in MALDI imaging has been the crystallization pattern. 2,4-DNPH crystallizes in long needles that do not properly cover the entire surface of the tissue. However, a mixture of 2,4-DNPH with HCCA in equal proportion preserves the benefit of the DNPH, i.e., neutralization of formalin, while HCCA gives the desired even crystallization across the tissue surface. This matrix mix was then used to perform MALDI imaging on FFPE rat brain tissue sections stored for 6–12 months. As shown in Figure 3 for reconstructed images from data recorded in the cerebellum, specific localization of peptides is observed as given in examples for m/z 1075, 1594, 2726, and 5163 ions.

For FFPE rat brain tissues stored over 1 year, it is impossible to obtain good signal by direct analysis of tissue after paraffin

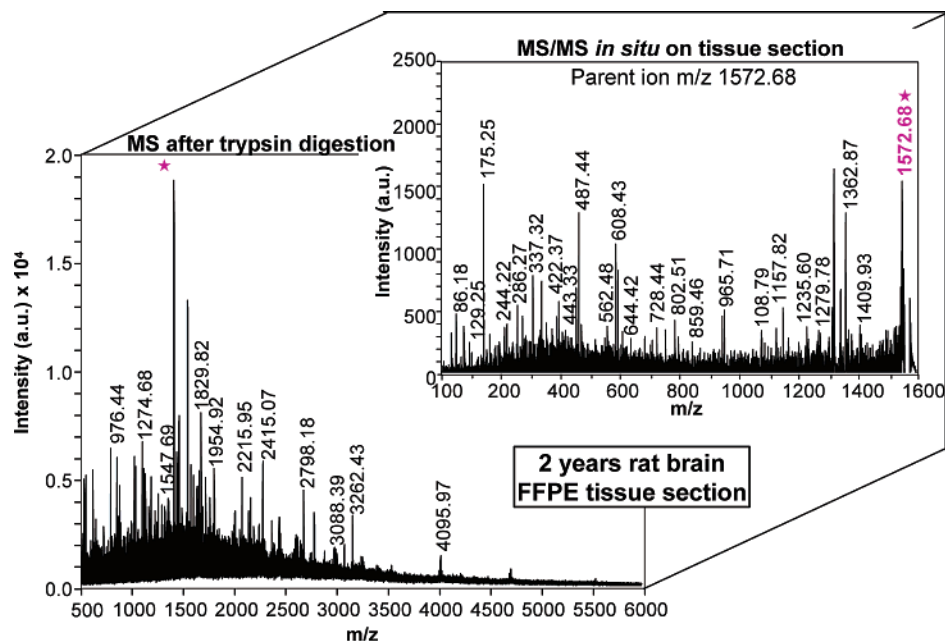


Figure 5. MALDI mass spectrum in the linear positive mode of the direct analysis of a 2 years old FFPE tissue section after *in situ* trypsin digestion of the whole tissue section (15 min) and MALDI metastable decay spectrum resulting from the fragmentation of the m/z 1572.68 parent ion using MALDI-TOF/TOF instrument (each experiment was conducted 5 times).

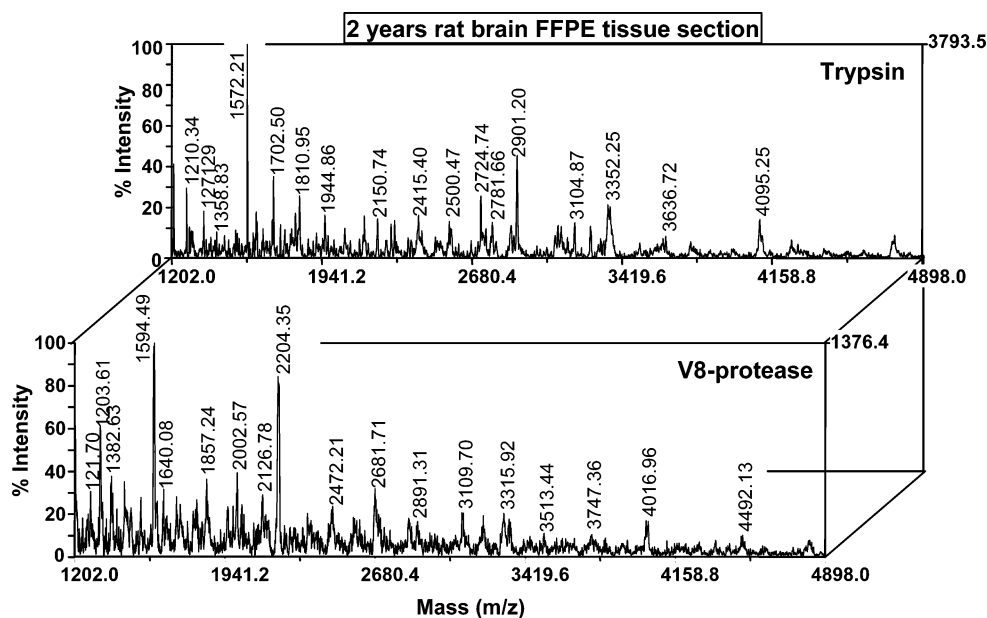


Figure 6. Comparison of the MALDI mass spectra in the linear positive mode of the direct analysis of a 2 years old FFPE rat brain tissue sections after *in situ* trypsin or V8-protease digestion using HCCA as matrix (each experiment was conducted 5 times).

removal (Figure 4). This phenomenon can be attributed to formalin reticulation which progresses with time, creating a particularly abundant protein network. For such tissues, another analytical strategy must be developed. Considering that the methylene bond is a strong link that is difficult to break without destroying the peptide backbone, we designed a biochemical approach using endopeptidase enzymatic digestion. Recently, this approach was successfully applied for protein identification from formalin-fixed tissues using LC-MS/MS.^{17–19} However, to our knowledge, direct digestion on FFPE tissues for direct MALDI-MS analysis has never been tested. Whole tissue digestion was carried out by covering the entire section with enzyme solution. Numerous signals (>300)

corresponding to digested peptides were observed, as presented in Figure 5 for a 15 min trypsin digestion. Interestingly, because very low fragmentation yields are obtained (even on frozen sections), as previously described,³⁰ enzymatically digested peptides present the classical behavior of peptides toward fragmentation. Metastable decay experiments performed on observed peptide ions with a MALDI-TOF/TOF directly on the tissue after digestion enabled us to identify several proteins, as illustrated for the fragmentation study of a peptide at m/z 1372.68 that was identified to be the hemoglobin α -chain by data bank interrogation with an ion score of 18 fragments of MS/MS identified on 58 total fragments possible (mainly b and y fragments, which is consistent with the experiments), con-

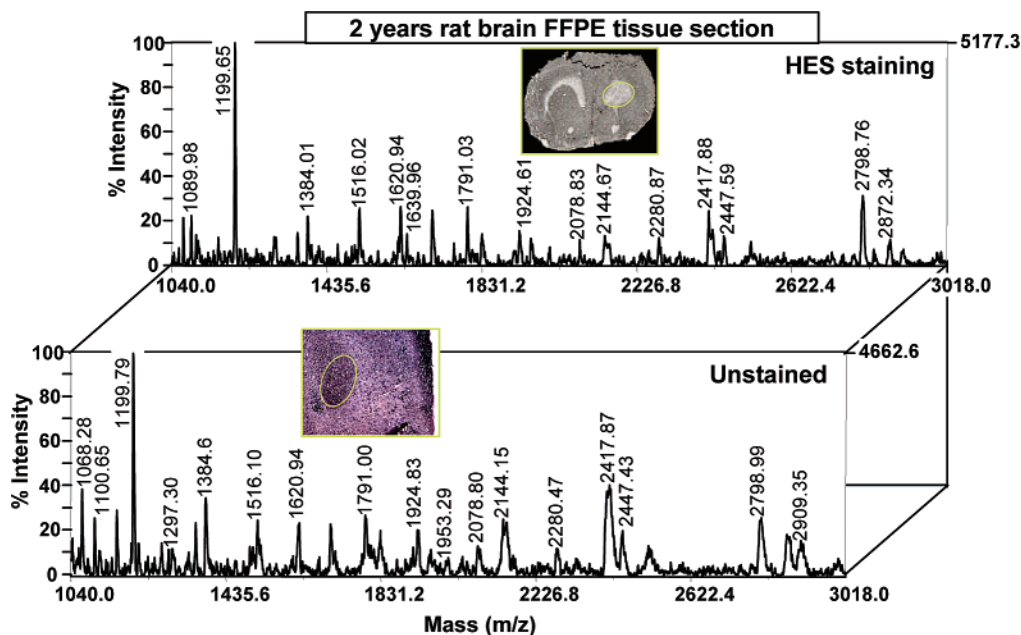


Figure 7. Comparison of the MALDI mass spectra in the linear positive mode of the direct analysis of a 2 years old FFPE rat brain tissue sections after *in situ* trypsin digestion or HES staining followed by *in situ* trypsin digestion using HCCA as matrix (each experiment was conducted 5 times).

firming that the peptides correspond to digested peptides within the tissue. Other proteins such as β -tubulin were also identified in the same way.

Several parameters, such as the buffer used, the concentration of the enzyme, and the temperature and time of digestion, were tested. Tris or bicarbonate buffers gave similar results. In regards to temperature, digestion was preferably carried out at ambient temperature, and no major difference was observed when compared with a digestion at 37 °C, probably due to the strong concentration of enzyme used. Concerning the time of digestion, many signals were obtained with very short incubations (2 min) as well as longer ones (up to 3 h), but depending upon the time of digestion, peptide profiles were very different, with much lower mass ions (or peptides) obtained for longer digestion time. These incubation times remain shorter than the traditional overnight digestions which could lead to signal saturation due to the abundance of detected peptides. In all cases, experiments were highly reproducible for identical incubation times and enzyme concentrations. Various enzymes were tested, mainly, V8 protease, AspN, and Lys C endopeptidases. As expected, specific profiles were obtained depending upon the enzyme used (Figure 6). Other fixation procedures were studied (e.g., Bouin's protocol²⁵) and successfully analyzed after enzymatic digestion (data not shown). It is thus possible to obtain and detect peptides/proteins directly from fixed tissues, by MALDI direct analysis after enzymatic digestion with various types of enzyme regardless of the fixation process used.

The same *in situ* digestion experiments can be carried out on microareas (up to 1 mm) by microdepositing the enzyme solution on specific areas of the tissue using either a micropipet for largest spots or a very fine capillary for smallest ones. Digestions on very small areas give excellent results. Microdigestion presents several advantages including less complex peptides/proteins mixtures, since less of these compounds are present on smaller areas, better enzymatic hydrolysis yields, and minimized delocalization, since at maximum delocalization we reach the dimension of the microarea. Comparison of

digestion profiles obtained from two different regions of the same rat brain section after MALDI direct analysis shows that digestion peptides are very different, thus, validating the strategy.

Moreover, to obtain MALDI direct analysis of tissues compatible with histological procedures and in particular with histological staining methods that are classically used in hospitals for diagnosis of biopsy samples, 2 year old rat brain FFPE tissue sections were submitted to enzymatic digestion following coloration. Chaurand et al. have shown that only some staining procedures were compatible with direct analysis, as well as imaging of frozen tissues.³¹ The area of interest can be located, then directly analyzed by mass spectrometry after matrix deposition. In our study, methylene blue, toluidine blue, and hematoxylin eosin safran (HES) staining were tested and compared to adjacent unstained tissue sections using direct MALDI analysis in the same regions after microspotting of the enzyme solutions. This procedure resulted in acceptable signal levels (Figure 7). The detection of peptides is slightly lower than that for untreated tissue, in the mass range of 1000–1500 and 1800–2300 u, but is basically the same as observed in unstained sections. This phenomenon has also been noted during the study of frozen tissues by Chaurand et al.,⁵ and for FFPE tissues, a correlation between time and coloration of the tissue leads to a considerable reduction of spectral quality. Nevertheless, when traditional times of staining are used, very good signals, mainly equal to signals obtained from unstained sections, were observed for direct MALDI analysis after trypsin digestion.

To improve protein identification, extraction procedures after *in situ* digestion were tested. Various extraction procedures were examined (see Figure 8), including Tris buffer, H₂O, ethanol, and direct deposition of functionalized magnetic beads (C8 or C3 functionalized silica beads). The mass spectra show that certain ions present very different abundance depending on the extraction conditions. These results provide evidence for the importance of the extraction step that orientates protein identification depending on the physicochemical properties of the buffer or support used inducing a prefractionation of the

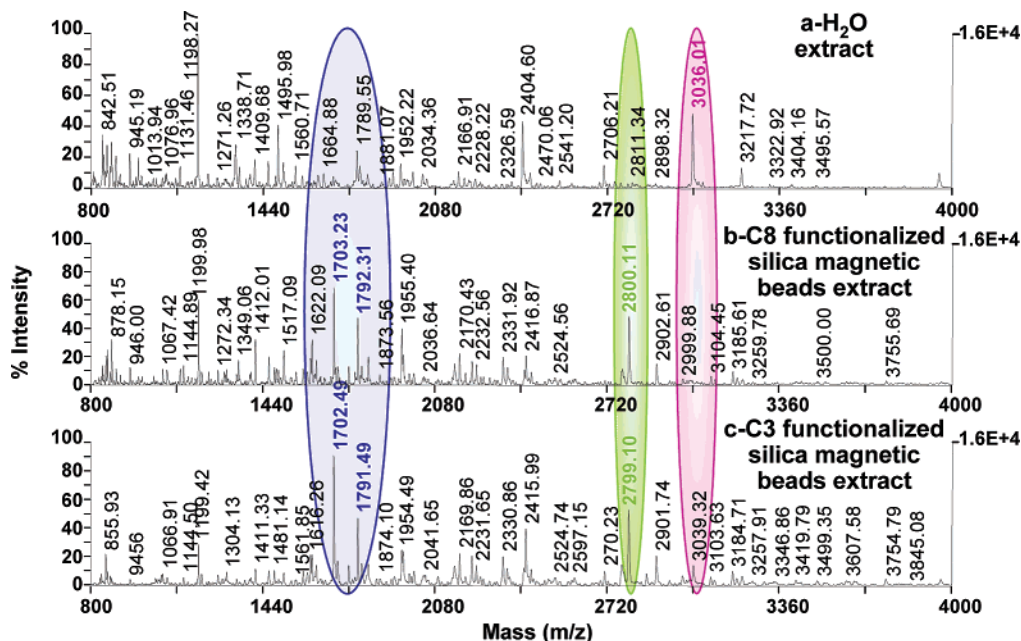


Figure 8. Comparison of the MALDI mass spectra in the linear positive mode of the direct analysis of a 2 years old FFPE rat brain tissue section after *in situ* trypsin digestion followed by extraction of digestion peptides by H₂O, C8-functionalized silica magnetic beads, or C3-functionalized silica magnetic beads using HCCA as matrix (each experiment was conducted 5 times).

very complex sample. The extraction of digestion peptides was followed by a purification step for desalting and buffer removal when needed (i.e., Tris buffer or ethanol extraction) before injection on a nanoLC-nanoESI system. Finally, different strategies can be used to obtain protein identification. The different strategies tested are schematically represented and summarized in Figure 9. Basically, it is possible to work directly on tissue up to the step of digestion peptides' extraction for the LC-MS and MS/MS analyses. Here, it is again possible to choose either to perform a global digestion of one part of the tissue section before extracting the resulting peptides using either EtOH, Tris buffer, or functionalized magnetic beads. In another strategy, enzymatic digestion can be performed on a microarea (as previously presented) by rastering the tissue and using an automatic microspotter. In this case, digested peptides can be extracted by covering the whole tissue with Tris buffer and pipetting it for analysis. It is also possible to scrap one part of the tissue section (e.g., the half), transfer the tissue pieces into a tube, and perform the enzymatic digestion before analysis by nanoLC-MS and MS/MS.

The methodology was validated by comparing the nano-HPLC profiles for the different strategies. Comparable results were obtained for the same extraction protocols, demonstrating that *in situ* digestion and extraction yield identical results as *in vitro* ones. Figure 10 shows a chromatogram obtained from the total ion current of the mass spectrometer detector against the retention time obtained after on-tissue digestion with trypsin and extraction using C8 functionalized silica beads of a whole part of the FFPE tissue. Measuring *m/z* of peptides for each chromatographic peak, performing automatic MS/MS experiments on the most intense ones, and using these data for databanks analysis, we identified more than 100 proteins with this approach (Table 1). All proteins identified are proteins expected to be found in rat brain. From the databases, subcellular localization of these proteins was obtained, and notably, proteins from very different cellular compartments such as the cytoplasm, nuclear envelope, or cytoskeleton are

present, demonstrating that "MALDI enzyme assisted direct analysis" digestion not only occurs at the surface of the cell, but also produces an efficient hydrolysis within cells. Similarly, identified proteins are implicated in very different biological activities (e.g., enzyme, regulation, or signal transduction) demonstrating that this strategy can obtain a large panel of protein functions. Moreover, detection of very high mass proteins directly from tissue, for example, Na⁺/K⁺ transporting ATPase (111 kDa) or neural cell adhesion molecule (95 kDa), was also possible. Validation of this strategy on *in situ* enzymatic digestion of FFPE tissues was carried out with a similar analysis by nanoLC-MS/MS of frozen tissues treated with trypsin, using the same digestion time and studying the same area of the brain, resulted in very similar protein profiles.

The last challenge was to attempt MALDI imaging of FFPE tissues of greater than 2 years using the enzymatic digestion strategy. Digesting the whole tissue section was possible but would have produced a possible delocalization of certain peptides liberated in the digestion process. Different solutions were tested to limit this phenomenon, including a vaporization of matrix, ionic matrices,³⁰ or the use of an automatic spotter which allows the deposition of microdroplets of matrix point by point.³² Studies clearly demonstrate that the microspotting method is the best suited for MALDI imaging. Rastering the tissue section with automatic microspotting of trypsin enzyme results in digest peptides profiles of the whole sample with a limited delocalization to within the size of the matrix spot (i.e., 300 μm). For these studies, classically used Tris buffer was replaced with bicarbonate buffer to avoid desalting steps. Digestion was efficient only after several spottings of the enzyme (2 or 3 depending on the deposited volume) on the same spots, thus, requiring a high-accuracy positioning microspotter. After digestion, matrix solution was then spotted on the same spots as the enzyme, and the tissue section was submitted to MALDI analysis, recording the images following the same path of deposition. From the data recorded, images of numerous proteins could be indirectly obtained by looking

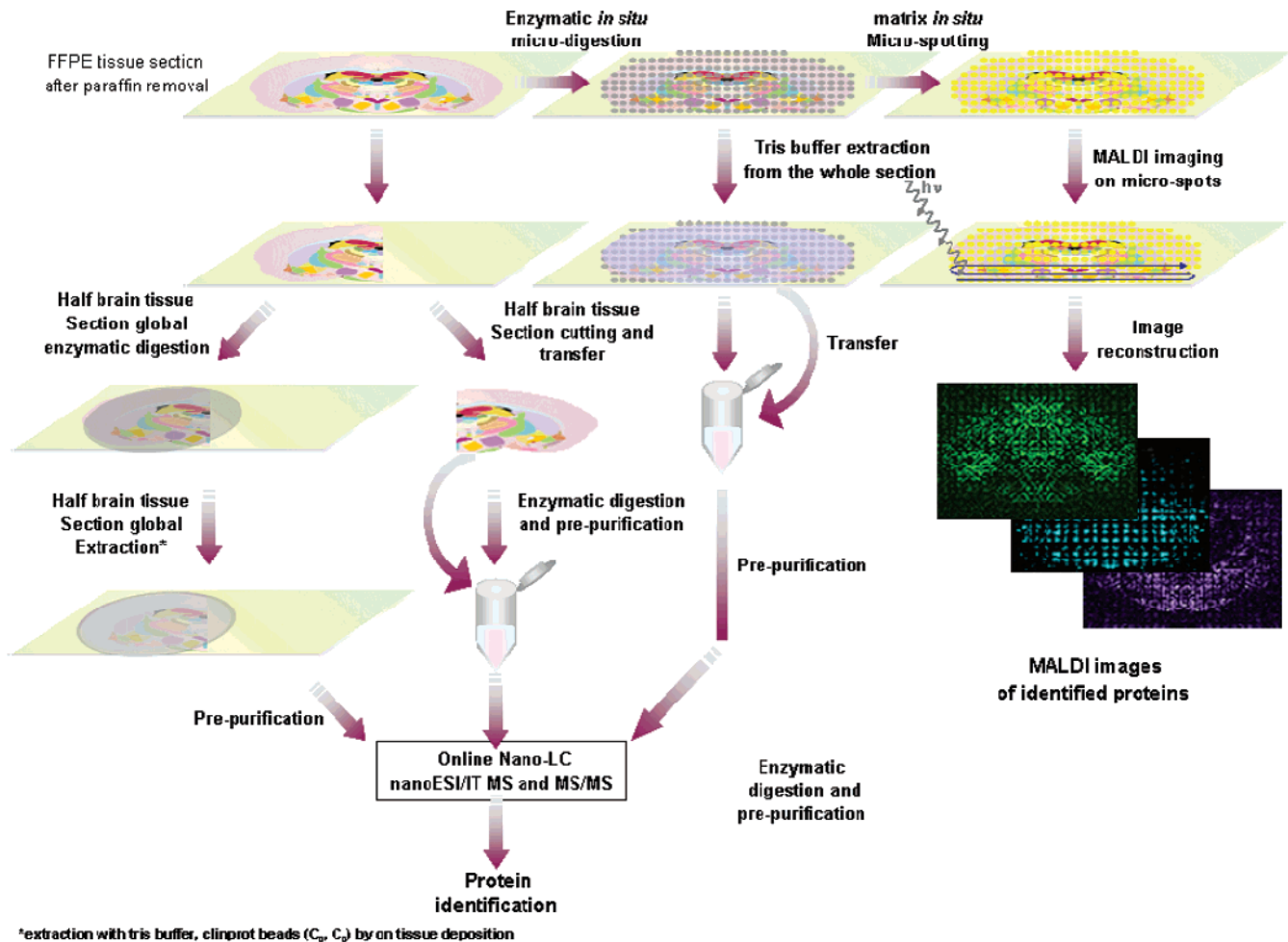


Figure 9. Schematic representation of the different strategies explored for obtaining identification and/or images of proteins directly from FFPE tissues independently of storage length.

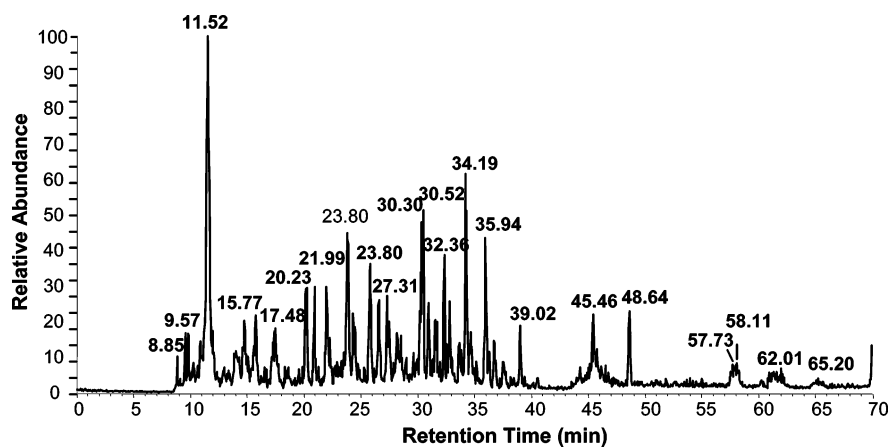


Figure 10. nanoLC chromatogram of C8-functionalized silica magnetic beads peptides extracts on a 2 years old FFPE rat brain tissue section after *in situ* trypsin digestion recorded during nanoLC–MS/MS analysis (each experiment was conducted 5 times).

to their corresponding digestion peptides images. Images of proteins identified by the LC–MS/MS experiments can be obtained such as histone H3.3 with m/z 1033 ion, NCAM 1 with m/z 1521 ion, myelin protein with two different digestion fragments at m/z 1803 and 1340, and malate dehydrogenase with m/z 1103 ions as presented in Figure 11. Each of these proteins, as observed from the MALDI images, has very

different distributions in the rat brain tissue section. Images reconstructed on different ions corresponding to different digestion fragments give similar images, showing the validity of the presented strategy. Moreover, using similar automatic microdigestion, followed by microdeposition of the matrix, we were able to verify that the same protein localization was obtained for both the FFPE tissues and the frozen sections, as

Table 1. Table of Proteins Matching by Interrogation of Swiss-Prot Databank Based on the Whole Protein Digestion Data Obtained by Direct MALDI Analysis of *in Situ* Digestion of the Whole Tissue Section of a 2 year Old FFPE Rat Brain Tissue^a

measured <i>m/z</i> direct MALDI analysis	calculated <i>m/z</i> identified in ESI	% variation	protein	accession number	mass (Da)	match score	molecular function	subcellular location
1016.2	1015.5	0.06	Enolase	P04764	46967	173	Enzyme	Cytoplasm
1033.0	1032.6	0.04	Histone H3.3	P84245	15187	71	–	Nuclear
1144.1	1144.6	0.04	Tubulin β Chain	P69897	49639	433	Structural protein	Microtubule
1188.9	1188.6	0.02	Actin	P60711	41710	312	Cell mobility	Cytoplasm
1303.8	1303.6	0.01	Na ⁺ /K ⁺ Transporting aptase	P06687	111620	282	Enzyme	Cytoplasm
1340.0	1339.7	0.02	Malate dehydrogenase	O88989	36461	152	Enzyme	Cytoplasm
1370.0	1369.7	0.02	GLyceraldehyde 3P dehydrogenase	P04797	35682	134	Enzyme	Cytoplasm
1394.2	1393.7	0.03	Neurofilament triplet L	P19527	61167	145	Maintenance of neuronal caliber	Cytoskeleton, nuclear envelope
1490.1	1490.7	0.04	Protein kinase C inhibitor protien	P63102	27754	111	Intracellular signaling, signal transduction, cell cycle	Cytoplasm
1516.1	1516.1	0.00	HSC 71 kDa	P63018	70827	295	Molecular chaperone	Cytoplasm
1520.0	1519.1	0.02	Neural cell adhesion molecular	P13596	94599	67	–	–
1548.6	1548.7	0.00	Elongation factor 1- α	P62630	50082	62	–	Nuclear
1616.0	1615.8	0.01	Syntaxin 1 β	P61265	33224	63	Regulating protein	Cytoplasm and membrane associated
1621.1	1621.8	0.04	Triosephosphate isomerase	P48500	26773	48	Enzyme	Cytoplasm
1683.6	1683	0.01	Phospho glycerate mutase 1	P25113	28497	55	–	Cytosol
1748.0	1747.8	0.01	Fructose biphosphate aldolase	P05065	39196	113	Enzyme	Cytoplasm
1759.8	1759.8	0.00	Histone H2B	Q00715	13851	109	–	Nuclear
1770.6	1770.8	0.01	Neurofilament triplet M	P12839	95603	51	Maintenance of neuronal caliber	Cytoskeleton, nuclear envelope
1804.7	1804.9	0.01	Myelin basic protein S	P02688	14071	172	–	–
1830.3	1829.9	0.02	DRP2	P47942	62239	231	Axon elaboraton	Membrnae associated
1884.5	1893.9	0.03	Internexin	P23565	56082	180	Maintenance of neuronal caliber	Cytoskeleton, nuclear envelope

^a Results include protein score and percentage of sequence coverage.

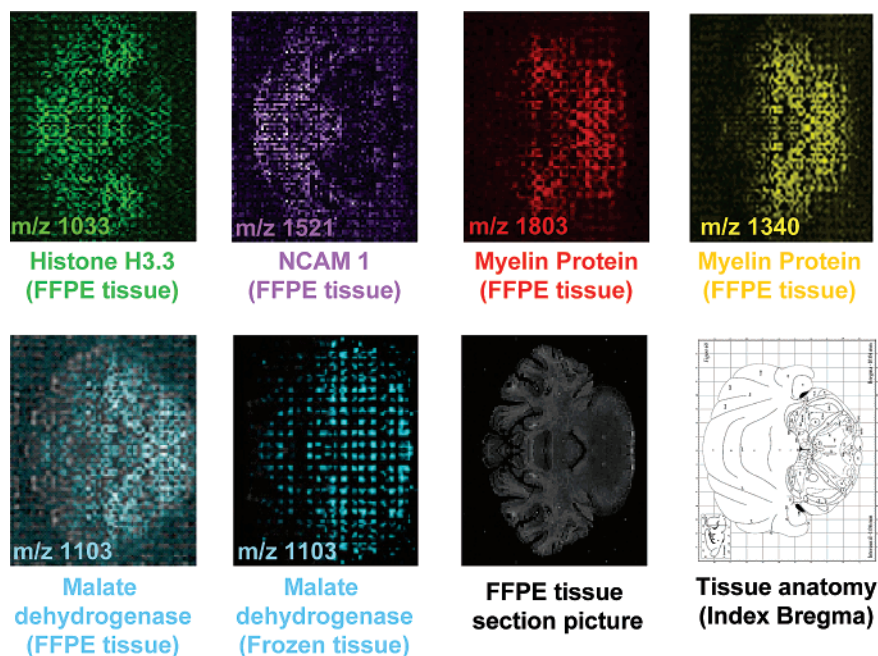


Figure 11. MALDI molecular images reconstructed from the data recorded on the 2 years old FFPE rat brain tissue section after microspotted *in situ* trypsin digestion followed by extraction, performed on MALDI-TOF/TOF using HCCA as matrix, and compared to rat brain picture and morphology (each experiment was conducted 5 times).

shown for *m/z* 1103 ion repartition corresponding to a digestion peptide of malate dehydrogenase protein.

Discussion

FFPE is so far the most convenient method for pathologist to conserve samples in hospital tissue banks. However, FFPE

induces proteins cross-linking and provokes difficulties for MALDI direct analysis. Moreover, cross-linking continues in time; thus, different analytical strategies must be developed. For conservation time below 1 year, direct analysis remains possible, but notable loss in resolution and signal are observed especially for higher mass proteins. When the 2,4-DNPH

reactive matrix is used, signal of peptides (less than 5 kDa) can be retrieved with a normal resolution. When 2,4-DNPH reactive matrix is mixed with HCCA, very good matrix crystallization patterns are obtained, and MALDI imaging of the peptides/proteins can be directly performed on such tissues, with comparable results to those of frozen conserved samples.

For longer stored tissue (>1 year), very few signals were obtained from the FFPE tissues, and another strategy was developed based on tissue enzymatic digestion. This approach gave abundant signal for MALDI direct analysis of 2 years old FFPE rat brain tissues and was shown to be compatible with classical histology colorations. Protein identification was also possible by extraction after the digestion and analysis by LC-MS/MS. "MALDI-MS enzyme assisted direct analysis" allowed the detection of many proteins with different subcellular location, biological activities, or molecular mass including high molecular weight compounds. By combining enzymatic cleavage on tissue with high-accuracy automatic spotting of enzyme and matrix, and ESI identification of peptides/proteins, we performed for the first time MALDI imaging on 2 years old archived FFPE rat brain tissues and successfully obtained the expected localization of several identified proteins. The localization of various proteins on frozen tissue is identical when compared to that of proteins on FFPE tissue as in the case of malate dehydrogenase.

These results provide access to archived tissues for proteomic studies using MALDI-MS direct analysis and imaging experiments for localization of a large number of compounds in a single experiment.

Abbreviations: FFPE, formalin-fixed, paraffin-embedded; nanoLC, nanoflow liquid chromatography; OCT, optimal cutting temperature compound; MALDI, matrix-assisted laser desorption/ionisation; MS, mass spectrometry; DNPH, 2,4-dinitrophenylhydrazine; HCCA, α -cyano-4-hydroxycinnamic acid; SA, sinapinic acid; ITO, indium teen oxide.

Acknowledgment. Supported by grants from Centre National de la Recherche Scientifique (CNRS), Ministère de L'Éducation Nationale, de L'Enseignement Supérieur et de la Recherche (ACI Jeunes Chercheurs ACI JC4074 to I. Fournier), the Canadian Institutes of Health Research (CIHR to R. Day). The authors thank A. Page, D. Bonnel, and L. Venel for their technical collaborations. Also supported by a collaboration agreement between Bruker Daltonics GmbH and the Laboratoire de Neuroimmunologie des Annelides. The authors also sincerely thank Mr. W. Amoyal (Disruptive Technology, France) for his collaboration in this project through access to MALDI Sun Collect Spotter. Sincere thanks are also due to Dr. A. Woods (NIDA, Baltimore, MD) for her critical reading of the manuscript.

References

- Hillenkamp, F.; Karas, M.; Beavis, R. C.; Chait, B. T. Matrix-assisted laser desorption/ionization mass spectrometry of biopolymers. *Anal. Chem.* **1991**, *63* (24), 1193A–1203A.
- Karas, M.; Hillenkamp, F. Laser desorption ionization of proteins with molecular masses exceeding 10,000 daltons. *Anal. Chem.* **1988**, *60* (20), 2299–2301.
- Tanaka, K.; Waki, H.; Ido, Y.; Akita, S.; Yoshida, Y.; Yohida, T. Protein and polymer analyses up to m/z 100,000 by laser ionization time-of-flight mass spectrometry. *Rapid Commun. Mass Spectrom.* **1988**, *2* (8), 151–153.
- Caprioli, R. M.; Farmer, T. B.; Gile, J. Molecular imaging of biological samples: localization of peptides and proteins using MALDI-TOF MS. *Anal. Chem.* **1997**, *69* (23), 4751–4760.
- Chaurand, P.; Schwartz, S. A.; Caprioli, R. M. Profiling and imaging proteins in tissue sections by MS. *Anal. Chem.* **2004**, *76* (5), 87A–93A.
- Stoeckli, M.; Chaurand, P.; Hallahan, D. E.; Caprioli, R. M. Imaging mass spectrometry: a new technology for the analysis of protein expression in mammalian tissues. *Nat. Med.* **2001**, *7* (4), 493–496.
- Bunch, J.; Clench, M. R.; Richards, D. S. Determination of pharmaceutical compounds in skin by imaging matrix-assisted laser desorption/ionisation mass spectrometry. *Rapid Commun. Mass Spectrom.* **2004**, *18* (24), 3051–3060.
- Fournier, I.; Day, R.; Salzet, M. Direct analysis of neuropeptides by in situ MALDI-TOF mass spectrometry in the rat brain. *Neuroendocrinol. Lett.* **2003**, *24* (1–2), 9–14.
- Li, L.; Garden, R. W.; Sweedler, J. V. Single-cell MALDI: a new tool for direct peptide profiling. *Trends Biotechnol.* **2000**, *18* (4), 151–160.
- Luxembourg, S. L.; Mize, T. H.; McDonnell, L. A.; Heeren, R. M. High-spatial resolution mass spectrometric imaging of peptide and protein distributions on a surface. *Anal. Chem.* **2004**, *76* (18), 5339–5344.
- Rohner, T. C.; Staab, D.; Stoeckli, M. MALDI mass spectrometric imaging of biological tissue sections. *Mech. Ageing Dev.* **2005**, *126* (1), 177–185.
- Rubakhin, S. S.; Jurchen, J. C.; Monroe, E. B.; Sweedler, J. V. Imaging mass spectrometry: fundamentals and applications to drug discovery. *Drug Discovery Today* **2005**, *10* (12), 823–837.
- Spengler, B.; Hubert, M. Scanning microprobe matrix-assisted laser desorption ionization (SMALDI) mass spectrometry: instrumentation for sub-micrometer resolved LDI and MALDI surface analysis. *J. Am. Soc. Mass Spectrom.* **2002**, *13* (6), 735–748.
- Chaurand, P. L.; K. B.; Stathopoulos, G.; Caprioli, R. M. Profiling and imaging mass spectrometry on thin sections from solvent preserved tissue specimens. *Proceedings of the 53rd Annual Conference on Mass Spectrometry and Allied Topics*, San Antonio, Tx, June 5–9, 2005.
- Kruse, R.; Sweedler, J. V. Spatial profiling invertebrate ganglia using MALDI MS. *J. Am. Soc. Mass Spectrom.* **2003**, *14* (7), 752–759.
- Jaremko, M.; Justenhoven, C.; Abraham, B. K.; Schroth, W.; Fritz, P.; Brod, S.; Vollmert, C.; Illig, T.; Brauch, H. MALDI-TOF MS and TaqMan assisted SNP genotyping of DNA isolated from formalin-fixed and paraffin-embedded tissues (FFPET). *Hum. Mutat.* **2005**, *25* (3), 232–238.
- Crockett, D. K.; Lin, Z.; Vaughn, C. P.; Lim, M. S.; Elenitoba-Johnson, K. S. Identification of proteins from formalin-fixed paraffin-embedded cells by LC-MS/MS. *Lab. Invest.* **2005**, *85* (11), 1405–1415.
- Hood, B. L.; Darfler, M. M.; Guiel, T. G.; Furusato, B.; Lucas, D. A.; Ringeisen, B. R.; Sesterhenn, I. A.; Conrads, T. P.; Veenstra, T. D.; Krizman, D. B. Proteomic analysis of formalin-fixed prostate cancer tissue. *Mol. Cell. Proteomics* **2005**, *4* (11), 1741–1753.
- Palmer-Toy, D. E.; Krastins, B.; Sarracino, D. A.; Nadol, J. B., Jr.; Merchant, S. N. Efficient method for the proteomic analysis of fixed and embedded tissues. *J. Proteome Res.* **2005**, *4* (6), 2404–2411.
- Ahram, M.; Flaig, M. J.; Gillespie, J. W.; Duray, P. H.; Linehan, W. M.; Ornstein, D. K.; Niu, S.; Zhao, Y.; Petricoin, E. F., III; Emmert-Buck, M. R. Evaluation of ethanol-fixed, paraffin-embedded tissues for proteomic applications. *Proteomics* **2003**, *3* (4), 413–421.
- Mouledous, L.; Hunt, S.; Harcourt, R.; Harry, J.; Williams, K. L.; Gutstein, H. B. Navigated laser capture microdissection as an alternative to direct histological staining for proteomic analysis of brain samples. *Proteomics* **2003**, *3* (5), 610–615.
- Shi, S. R.; Liu, C.; Balgley, B. M.; Lee, C.; Taylor, C. R. Protein extraction from formalin-fixed, paraffin-embedded tissue sections: quality evaluation by mass spectrometry. *J. Histochem. Cytochem.* **2006**, *54* (6), 739–743.
- Hood, B. L.; Conrads, T. P.; Veenstra, T. D. Mass spectrometric analysis of formalin-fixed paraffin-embedded tissue: unlocking the proteome within. *Proteomics* **2006**, *6* (14), 4106–4114.
- Hood, B. L.; Conrads, T. P.; Veenstra, T. D. Unravelling the proteome of formalin-fixed paraffin-embedded tissue. *Briefings Funct. Genomics Proteomics* **2006**, *5* (2), 169–175.

- (25) Salzet, M.; Watzet, C.; Verger-Bocquet, M.; Beauvillain, J. C.; Malecha, J. Oxytocin-like peptide: a novel epitope colocalized with the FMRFamide-like peptide in the supernumerary neurons of the sex segmental ganglia of leeches—morphological and biochemical characterization; putative anti-diuretic function. *Brain Res.* **1993**, *601* (1–2), 173–184.
- (26) Redeker, V.; Toullec, J. Y.; Vinh, J.; Rossier, J.; Soyez, D. Combination of peptide profiling by matrix-assisted laser desorption/ionization time-of-flight mass spectrometry and immunodetection on single glands or cells. *Anal. Chem.* **1998**, *70* (9), 1805–1811.
- (27) Rubakhin, S. S.; Greenough, W. T.; Sweedler, J. V. Spatial profiling with MALDI MS: distribution of neuropeptides within single neurons. *Anal. Chem.* **2003**, *75* (20), 5374–5380.
- (28) Metz, B.; Kersten, G. F.; Hoogerhout, P.; Brugghe, H. F.; Timmermans, H. A.; de Jong, A.; Meiring, H.; ten Hove, J.; Hennink, W. E.; Crommelin, D. J.; Jiskoot, W. Identification of formaldehyde-induced modifications in proteins: reactions with model peptides. *J. Biol. Chem.* **2004**, *279* (8), 6235–6243.
- (29) Fenaille, F.; Tabet, J. C.; Guy, P. A. Identification of 4-hydroxy-2-nonenal-modified peptides within unfractionated digests using matrix-assisted laser desorption/ionization time-of-flight mass spectrometry. *Anal. Chem.* **2004**, *76* (4), 867–873.
- (30) Lemaire, R.; Tabet, J. C.; Ducoroy, P.; Hendra, J. B.; Salzet, M.; Fournier, I. Solid ionic matrixes for direct tissue analysis and MALDI imaging. *Anal. Chem.* **2006**, *78* (3), 809–819.
- (31) Villanueva, J.; Philip, J.; Entenberg, D.; Chaparro, C. A.; Tanwar, M. K.; Holland, E. C.; Tempst, P. Serum peptide profiling by magnetic particle-assisted, automated sample processing and MALDI-TOF mass spectrometry. *Anal. Chem.* **2004**, *76* (6), 1560–1570.
- (32) Aerni, H. R.; Cornett, D. S.; Caprioli, R. M. Automated acoustic matrix deposition for MALDI sample preparation. *Anal. Chem.* **2006**, *78* (3), 827–834.

PR060549I